

Desoutter



Industrial Tools



EIDS SERIES: EIDS & EADS

The next generation
of electric transducerized
screwdrivers.

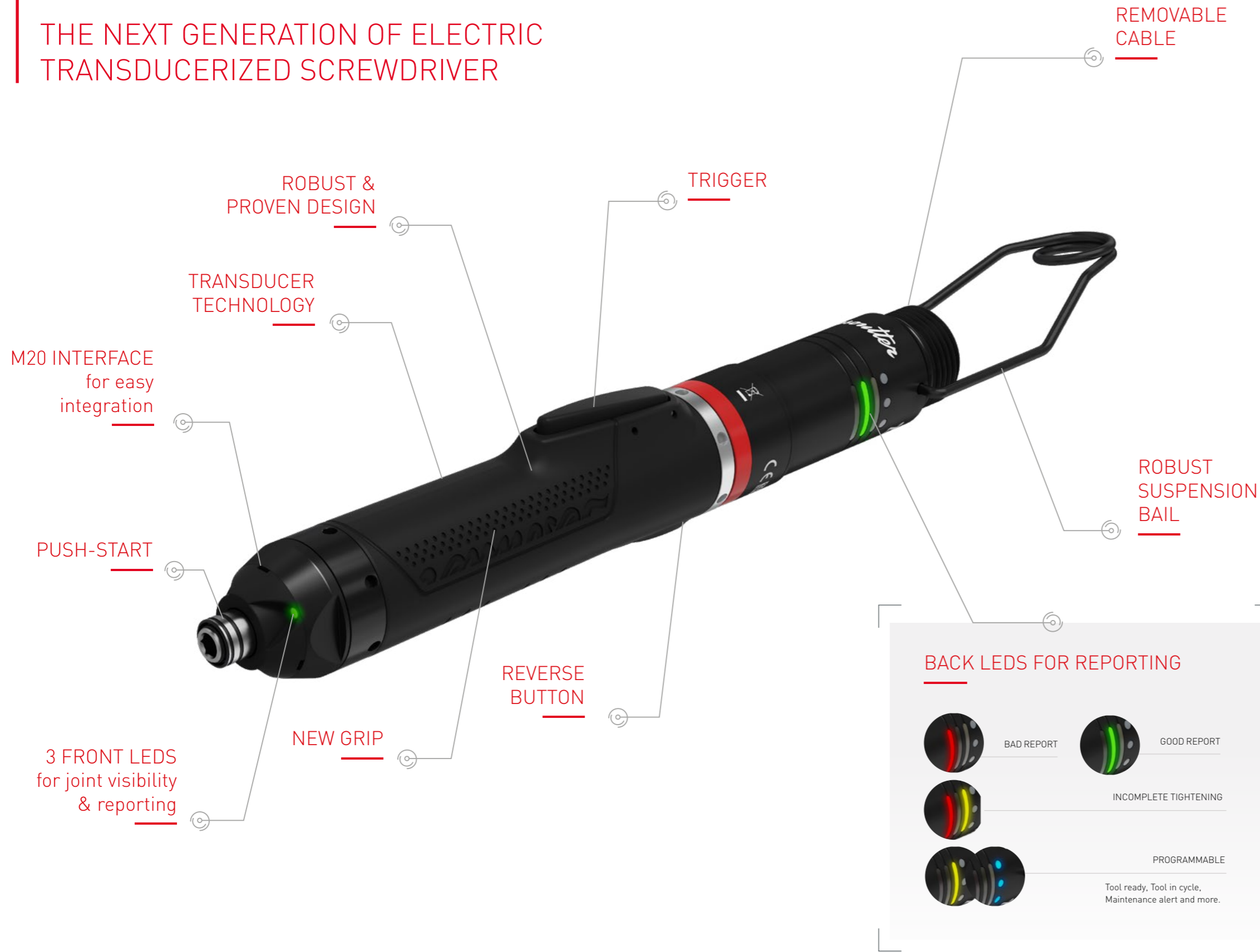
- HIGH ACCURACY
- DESIGNED TO LAST
- SEAMLESS INTEGRATION

More Than Productivity



EIDS

THE NEXT GENERATION OF ELECTRIC TRANSDUCERIZED SCREWDRIVER



BOOST YOUR PRODUCTIVITY

- Very high accuracy (5%) across the full torque range (Cmin to Cmax, ISO 5393 and VDI/VDE 2647) for consistent tightening quality and to avoid recalls and scrap
- Wide torque range reducing complexity: EIDS: 0.2 Nm to 16 Nm EADS: 2 Nm to 22 Nm
- High torque ratio per tool enables more applications with fewer tools, reducing tooling base and inventory

BOOST YOUR FLEXIBILITY

- Versatile design: suitable for handheld or spindle use, adaptable to multiple applications, with an M20 interface on straight tool (EIDS)
- All start modes (Lever Start, Push Start or External Start) available under the same product reference
- Operator feedback (Configurable LEDs)

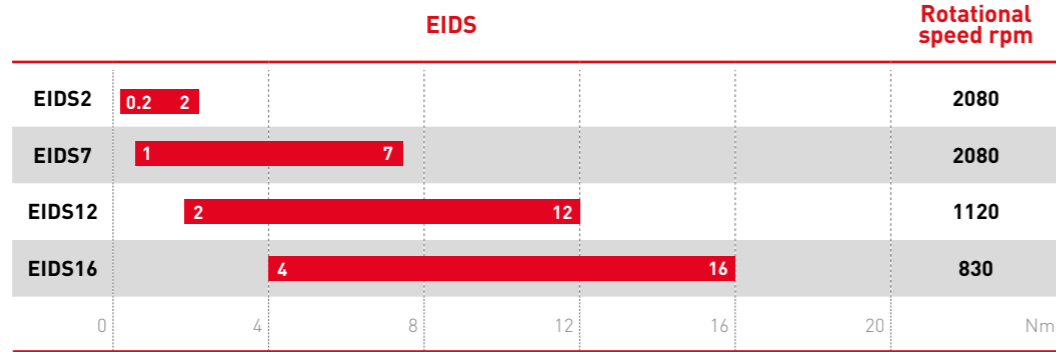
BOOST YOUR UPTIME

- Save maintenance and installation time with interchangeable cables
- Durable components designed to minimize downtime and extend tool life
- Robust design for challenging environments, ESD-approved and compatible with ISO Cleanroom standard

EIDS RANGE



A



The EIDS range is designed as a straight tool, for optimal ergonomics.

PIC	MODEL	PART NUMBER	OUTPUT DRIVE	SPEED	MIN TORQUE		MAX TORQUE		WEIGHT		TOOL LENGTH	
			in.	rpm	Nm	ft/lb	Nm	ft/lb	kg	lb	mm	lb
A	EIDS2-2080-4Q	615 166 332 0	Hex. 1/4F	2080	0.2	0.36	2	1.47	0.83	1.83	298	11.7
A	EIDS7-2080-4Q	615 166 333 0	Hex. 1/4F	2080	1	0.74	7	5.16	0.83	1.83	298	11.7
A	EIDS12-1120-4Q	615 166 334 0	Hex. 1/4F	1120	2	1.47	12	8.85	0.83	1.83	298	11.7
A	EIDS16-830-4Q	615 166 335 0	Hex. 1/4F	830	4	2.95	16	11.8	0.83	1.83	298	11.7

PIC	MODEL	PART NUMBER	PUSH START	M20 INTERFACE	FRONT LED	BACK LED
A	EIDS2-2080-4Q	615 166 332 0	✓	✓	✓	✓
A	EIDS7-2080-4Q	615 166 333 0	✓	✓	✓	✓
A	EIDS12-1120-4Q	615 166 334 0	✓	✓	✓	✓
A	EIDS16-830-4Q	615 166 335 0	✓	✓	✓	✓

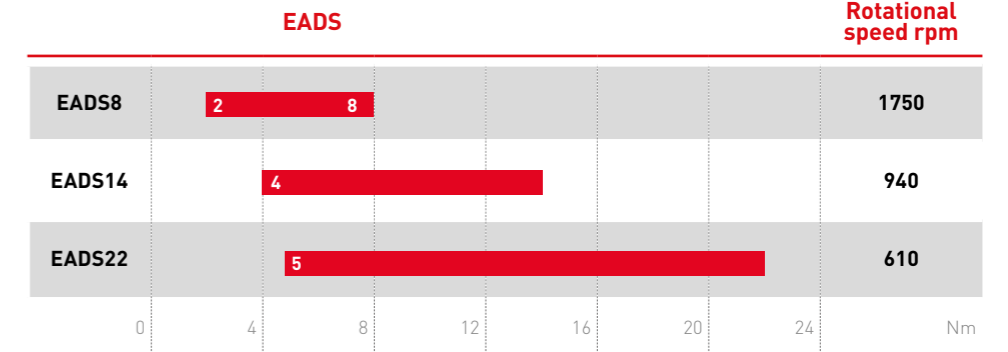


EADS RANGE



A

B



The EADS range features an angle-head, which expands its application coverage.

PIC	MODEL	PART NUMBER	OUTPUT DRIVE	SPEED	MIN TORQUE		MAX TORQUE		WEIGHT		TOOL LENGTH	
			in.	rpm	Nm	ft/lb	Nm	ft/lb	kg	lb	mm	lb
A	EADS8-1750-4Q	615 166 338 0	Hex. 1/4F	1750	2	1.47	8	5.9	0.99	2.18	344	13.54
A	EADS8-1750-4S	615 166 343 0	Sq. 1/4	1750	2	1.47	8	5.9	0.99	2.18	344	13.54
A	EADS8-1750-10S	615 166 344 0	Sq. 3/8	1750	2	1.47	8	5.9	0.99	2.18	344	13.54
A	EADS14-940-4Q	615 166 339 0	Hex. 1/4F	940	4	2.95	14	10.32	0.99	2.18	344	13.54
A	EADS14-940-4S	615 166 345 0	Sq. 1/4	940	4	2.95	14	10.32	0.99	2.18	344	13.54
A	EADS14-940-10S	615 166 346 0	Sq. 3/8	940	4	2.95	14	10.32	0.99	2.18	344	13.54
B	EADS22-610-10S	615 166 340 0	Sq. 3/8	610	5	3.69	22	16.32	1.14	2.51	362	14.25

PIC	MODEL	PART NUMBER	PUSH START	M20 INTERFACE	FRONT LED	BACK LED
A	EADS8-1750-4Q	615 166 338 0	✗	✗	✗	✓
A	EADS8-1750-4S	615 166 343 0	✗	✗	✗	✓
A	EADS8-1750-10S	615 166 344 0	✗	✗	✗	✓
A	EADS14-940-4Q	615 166 339 0	✗	✗	✗	✓
A	EADS14-940-4S	615 166 345 0	✗	✗	✗	✓
A	EADS14-940-10S	615 166 346 0	✗	✗	✗	✓
B	EADS22-610-10S	615 166 340 0	✗	✗	✗	✓

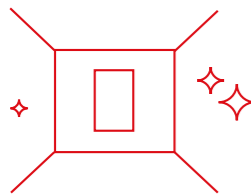
EIDS SERIES IS ESD-CERTIFIED



Desoutter offers ESD-certified screwdrivers in its standard range, widely used in the electronics industry. The EIDS series (EIDS and EADS) protect sensitive components from electrostatic discharge (ESD), which can cause invisible damage, reduce reliability, or lead to costly failures and warranty issues if no Electrostatic Protected Area (EPA) is in place.

Certified to IEC 61340-5-1 by SP, the Swedish National Testing and Research Institute, the EIDS series will never hold an electrostatic potential above 100 V for more than 2 seconds, ensuring maximum protection for your components.

EIDS RANGE IS CLEANROOM COMPLIANT



Cleanrooms prevent microscopic contamination that can compromise performance. Non-compliant tools introduce particles that damage precision components and affect product integrity. Using proper tools like EIDS7, along with the right protocols ensures controlled conditions and guarantees reliability and safety.

SOFTWARE PACKAGE

- EASY CONNECTIVITY AND A USER-FRIENDLY INTERFACE make for a fast installation and smooth commissioning
- EASY UPGRADE CAPABILITIES AND FLEXIBILITY OF THE TOOL RANGE assure readiness for your future requirements

- ROBUST TOOLS AND HARDWARE BACKUP provide a reliable and safe station
- ASSEMBLY QUALITY GUARANTEED with the process control and the error-proofing modules

CVI KEY

Create & manage tailor-made access rights per user profile

CVI CONFIG

Set up your systems point-to-point or on a network with a guided intuitive interface

CVI MONITOR

Live diagnostics for I/O and fieldbus for fast commissioning

CVI ANALYZER

Import, analyze tightening port, and data with results, curves, filters, and profiles

DE METER
Desoutter

Collect & store 100% tightening data in a real-time database with advanced analytics via a web-based software in service mode

OPERATOR REPORTING

FRONT LEDS

The front LEDs on EIDS are positioned close to the tightening area for optimal lighting, thanks to the gyroscope function.



REPORTING LEDS

The combination of the front LEDs (EIDS only) and the reporting LEDs on the back (EIDS and EADS) ensures that feedback is always visible to the operator, with no extra effort required.



LED reporting and lighting: The front white LED illuminate the tightening area on EIDS. The LED (front on EIDS and rear on EIDS and EADS) provide direct feedback to the operator. This increases productivity and reduces errors.



COMPATIBLE WITH 2 PLATFORMS

AXON & CVI3 (VISION, FUNCTION, ESSENTIAL, TWIN)



AXON - SX + DRIVE

AXON is a unique platform designed to fit all applications. It collects and monitors live data to ensure real-time error-proofing. With AXON, you gain access to Feature Management - a scalable solution that gives you exactly what you need. We offer three AXON packages tailored to match your applications, including the AXON terminal and its module. With the AXON terminal, you benefit from an embedded web user interface that gives you access to results and data anytime, anywhere, with no limit on the number of simultaneous users.

Learn more on our website.

Model	Part Number
AXON-SX + Module + TU essential	615 932 797 0
AXON-SX + Module + TU core	615 932 795 0
AXON-SX + Module + TU premium	615 932 796 0

CABLES

NEW CABLE

The new EIDS series comes with a new cable, the same as EPD range.



SUB-RANGE	MODEL	PART NUMBER
Cables	TOOL CABLE 2.5M	615 917 835 0
	TOOL CABLE 5M	615 917 836 0
	TOOL CABLE 10M	615 917 837 0
	TOOL CABLE 15M	615 917 838 0
Extensions	CABLE EXTENSION 8M	615 917 581 0
	CABLE EXTENSION 16M	615 917 584 0

Note: The total cable length (cable + extension) must remain below 30 meters.



CVI3 ESSENTIAL
Class B joint tightening for handheld application

Model	PN
CVI3 ESSENTIAL	615 932 695 0



CVI3 FUNCTION
All essential features with button keypad interface

Model	PN
CVI3 FUNCTION	615 932 690 0
CVI3 FUNCTION E-STOP	615 932 693 0



CVI3 VISION
User friendly with touchscreen interface and extend with battery tools possibilities

Model	PN
CVI3 VISION	615 932 691 0
CVI3 VISION E-STOP	615 932 694 0



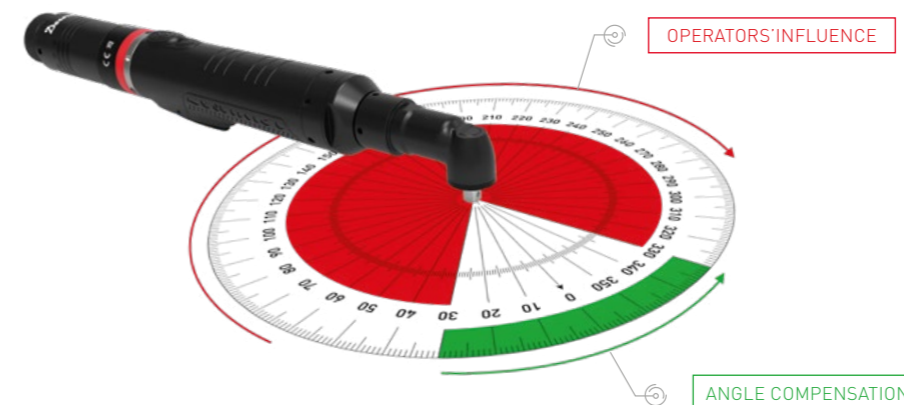
TWINCVI3 VISION
Compact controller With 2 tool channels

Model	PN
TWINCVI3	615 932 697 0
TWINCVI3 E-stop	615 932 698 0

eCOMPASS FUNCTION

ACCURACY MADE SIMPLE FOR EADS

eCOMPASS uses an on-board gyroscope to compensate for tool movement in real time, ensuring precise tightening and consistent joint quality, even when caused by the operator. This makes it ideal for handheld tools in difficult positions or when angle tolerances are critical.

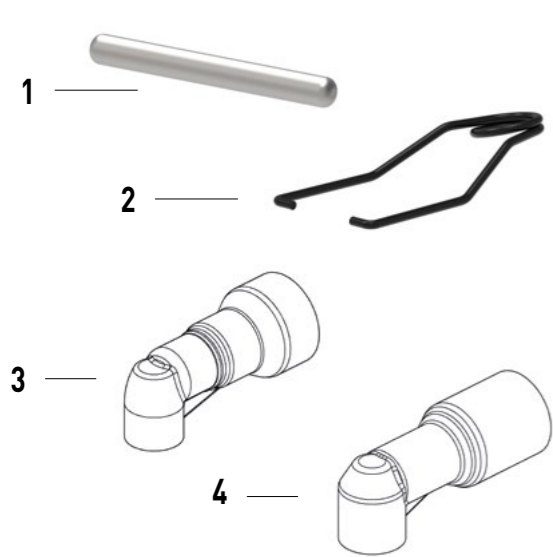


BENEFITS

- Precision:** Tighter angle control and early issue detection
- Consistency:** Reliable, repeatable results
- Simplicity:** No reaction arms or fixtures are needed

AVAILABLE ACCESSORIES

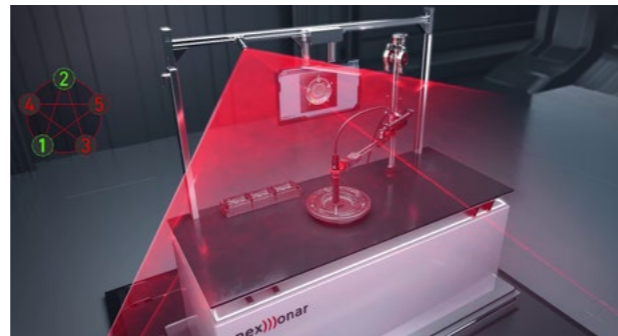
ACCESSORIES INCLUDED



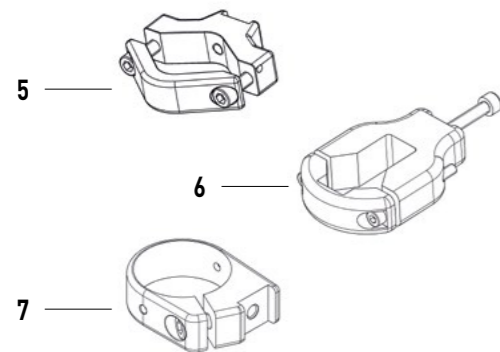
1	Trigger locker	0517010002
2	Suspension bail (EIDS only)	615 813 728 0
3	Tool protector Front for EADS8 and EADS14	615 211 274 0
4	Tool protector Front for EADS22	615 211 275 0

REAL-TIME LOCATION SYSTEM

nexonar solution	On request	Real-time tracking of connected assets and operator movements ensures error-proofing by verifying that every action happens with the right part, at the right time, in the right place. nexonar enables first-pass yield rates of up to 100% by monitoring tools or operator arm movements. Please contact your local representative to have the perfect solution for your needs.
------------------	------------	---

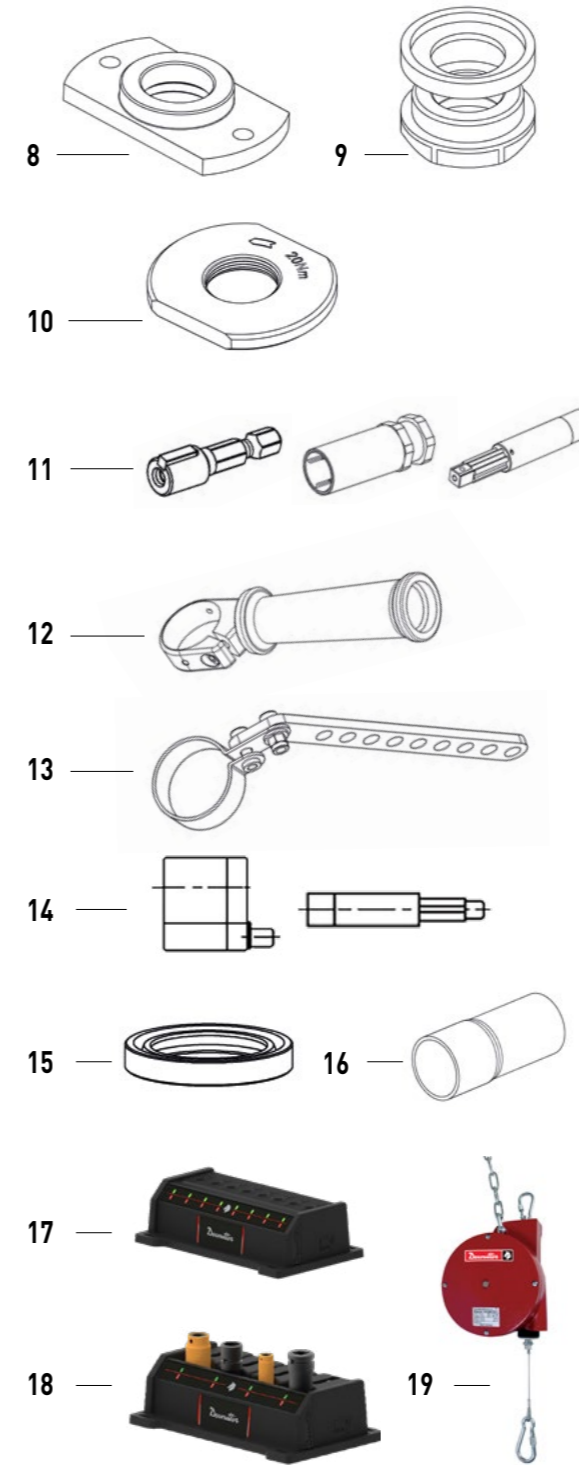


TOOL CLAMP



5	Tool clamp	615 810 118 0
6	Tool clamp	615 810 835 0
7	Tool clamp diameter 38mm for D53 arm (Recommended tool clamp)	615 810 129 0

OTHER ACCESSORIES



8	Flange EIDS	2050528753
9	Nose mount	2050528763
10	M20x1 Mounting nut	615 813 732 0
11	Spring loaded shafts EIDS	103782 + 108342 + 108412 (please order the 3 references)
12	Side handle 38mm	615 576 088 0
13	Suspension ring	615 813 733 0
14	Offset Head 30mm (1.18") & Shaft Spring loaded 3/8" SQ for EIDS	384993 + 108342 (please order both references)
15	Lip seal for vacuum use	615 659 050 0
16	Tool protector Rear	615 211 273 0
•	Tool protector Front for EIDS	615 211 276 0
17	Ethernet Bit Tray (with AXON only)	Refer to the Desoutter General Catalog
18	Ethernet Socket Tray (with AXON only)	Refer to the Desoutter General Catalog
19	Balancer	Refer to the Desoutter General Catalog

D53 ARM



D53-5 Linear arm for EIDS 2 (tool clamp included)	615 810 700 0
D53-12 Linear arm for EIDS2, EIDS7 and EIDS12 (tool clamp included)	615 810 701 0
D53-25 Linear arm for EIDS2, EIDS7, EIDS12 and EIDS16 (tool clamp included)	615 810 702 0
D53-25X Linear arm, extended reach for EIDS2, EIDS7, EIDS12 and EIDS16 (tool clamp included)	615 810 703 0
D53-5S Folder arm for EIDS 2 (tool clamp included)	615 810 706 0
D53-12S Folder arm for EIDS2, EIDS7 and EIDS12 (tool clamp included)	615 810 707 0
D53-25S Folder arm for EIDS2, EIDS7, EIDS12 and EIDS16 (tool clamp included)	615 810 708 0
D53-5 X/Y-AXLE CANOPEN for EIDS 2	615 812 267 0
D53-12 X/Y-AXLE CANOPEN for EIDS2, EIDS7 and EIDS12	615 812 268 0
D53-25 X/Y-AXLE CANOPEN for EIDS2, EIDS7, EIDS12 and EIDS16	615 812 269 0
D53-5 S X/Y-AXLE CANOPEN for EIDS 2	615 812 272 0
D53-12 S X/Y-AXLE CANOPEN for EIDS2, EIDS7 and EIDS12	615 812 273 0
D53-25 S X/Y-AXLE CANOPEN for EIDS2, EIDS7, EIDS12 and EIDS16	615 812 274 0

Refer to the Desoutter General Catalog for more information on D53 arms.

TRA ARM






TRA12-1150 UNI (for EIDS2, EIDS7 and EIDS12)	615 810 089 0
TRA25-1150 UNI (for EIDS2, EIDS7, EIDS12 and EIDS16)	615 810 092 0

Refer to the Desoutter General Catalog for more information and references on TRA



MAINTENANCE & CALIBRATION

MAXIMISED UPTIME, CONSISTENT QUALITY, EXTENDED LIFESPAN

	 TOOL CALIBRATION	 PREVENTIVE MAINTENANCE	 WARRANTY PACK
<p>Machine Capability Test (MCT)</p> <p>30 measurements MCT Certificate at Desoutter workshop Traceable to national standards, following ISO17025 Tool adjustment, pass/fail statement</p>	✓	✓	✓
<p>Preventive Maintenance and wear parts replacement¹</p> <p>Incoming inspection at the nearest Desoutter workshop Disassembly and spare parts evaluation² Wear parts replacement³, Cleaning and greasing, final performance verification</p> <p>¹ Once per year or before the number of tightenings stated in the Preventive Maintenance plan, whichever comes first ² A quotation is issued if other parts should be replaced ³ Wear parts included</p>		✓	✓
<p>Optimised Preventive Maintenance + Repairs</p> <p>Fixed budget including labour, genuine spare parts and Capability test Optimised Preventive Maintenance⁴ and repairs, at the nearest Desoutter workshop</p> <p>⁴ All spare parts replaced when needed, labour included</p>			✓
<p>Circularity</p> <p>When possible, we repair spare parts and reuse components, contributing to lowering your maintenance CO₂ footprint and adding circularity to your maintenance</p>			✓



MAINTENANCE & CALIBRATION

INCREASED UPTIME

- Less breakdowns with preventive maintenance

IMPROVED PRODUCTIVITY

- Quality is OK first time with preventive maintenance and calibration

INCREASED LIFESPAN

- Extend your tool's lifetime from preventive maintenance

REDUCED ENVIRONMENTAL IMPACT

- CO₂ and material savings from preventive maintenance

More Than Productivity