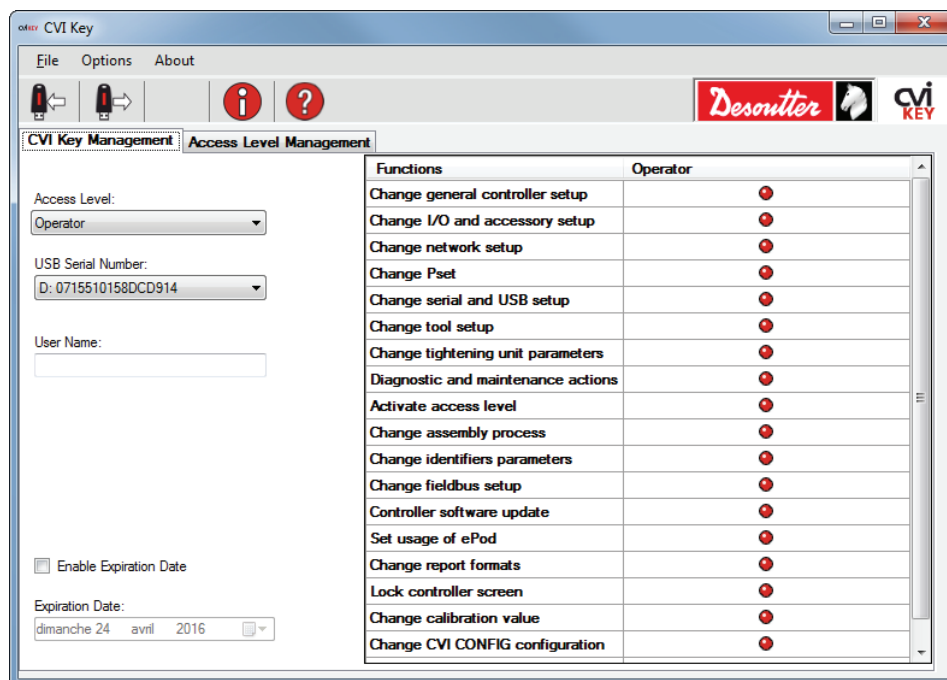




CVI KEY

V 1.1.0.X

User manual



Software
CVI KEY

Part number
6159276760

CONTENTS

1 - GETTING STARTED..... 4

1.1 - Installation requirements	4
1.2 - Installation	4
1.3 - Main screen.....	4
1.4 - Changing the language	4
1.5 - Predefined profiles	5

2 - HOW TO CREATE A PROFILE 6

2.1 - Adding a profile	6
2.2 - Changing a profile	6
2.3 - Deleting a profile	6

3 - HOW TO CREATE A USER KEY 7

4 - SAVE YOUR PROGRAMMING 7

Find more information and your Desoutter contacts on:

www.desouttertools.com

Software and documentation available at:

<http://resource-center.desouttertools.com>

Original instructions

© COPYRIGHT 2016, ETS GEORGES RENAULT 44818 ST HERBLAIN, FR

All rights reserved. Any unauthorized use or copying of the contents or part thereof is prohibited. This applies in particular to trademarks, model denominations, part numbers and drawings. Use only authorized parts. Any damage or malfunction caused by the use of unauthorised parts is not covered by Warranty or Product Liability.

1 - GETTING STARTED

CVI KEY is a master key to produce user keys with individual profiles.

4 profiles are predefined but customization is possible i.e. the user can define its own set of profiles with their associated own access levels.

1.1 - Installation requirements

Administrator rights required for installation.	
Operating systems	- Windows 7 - Windows XP
Free disk space	150 Mo
Monitor resolution	1280 x 1024



You will also need a USB key per user.

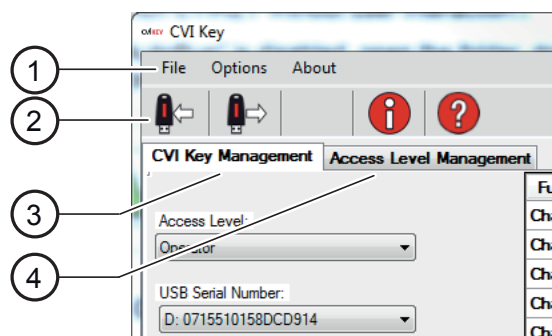
1.2 - Installation

- Plug the "CVI KEY" USB stick to the PC.
- If "AutoRun" is activated on the PC, the Autorun will launch the software without user interaction.
- If "AutoRun" is disabled, open the folder, double-click "CVI KEY" and double-click "CVI KEY.exe".



Always leave CVI KEY USB key connected while using the software.

1.3 - Main screen



1 Menu area

2 to save a user USB key

to read a USB key

to display information on connected USB keys

to display the user manual

3 CVI KEY management to produce user keys

4 Access level management to add / edit / delete customized profiles

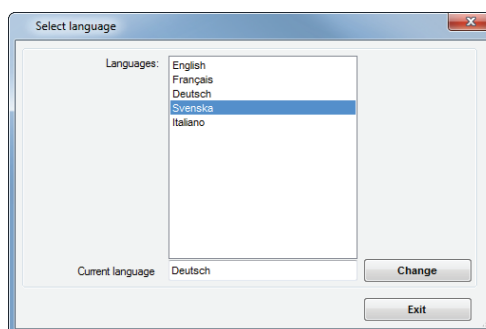
1.4 - Changing the language



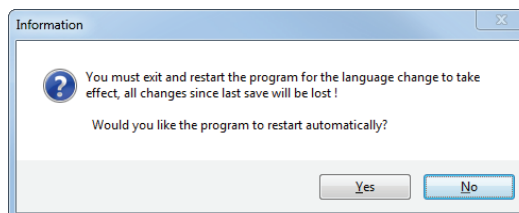
- Save your work before changing the language.

The language by default is "English".

- Select your own language in the "Options/Language" menu.



- Click "Change".



- Click "Yes" to let the program restart automatically.

1.5 - Predefined profiles

4 profiles are predefined but customization is possible i.e. the user can define its own set of profiles with their associated own access levels.

Functions	Operator	Production manager	Maintenance operator	Administrator
Change general controller setup This will allow to change the controller setup: <ul style="list-style-type: none"> - language - display - date and time - access manager - network - Fieldbus 	●	●	●	●
Change I/O & accessory setup This means change physical I/O configuration and event I/O programming.	●	●	●	●
Change network setup This allows changing the controller IP address, Subnet mask and Gateway parameters.	●	●	●	●
Change Pset This means create / add, change and delete Psets.	●	●	●	●
Change serial & USB setup This means change the serial and USB ports programming. 2 USB ports are dedicated to connect printers, barcode readers, USB keys 2 serial ports are dedicated to connect: Printer / Barcode reader / Delta measuring unit	●	●	●	●
Change tool setup This allows selecting the type of trigger. It is also possible to disable all triggers.	●	●	●	●
Change tightening unit parameters This means create / add, change and delete tightening units	●	●	●	●
Diagnostic and maintenance actions	●	●	●	●
Activate access level This enables access level control in the controller.	●	●	●	●
Change Assembly Process This means create / add, change and delete Assembly Processes.	●	●	●	●
Change identifiers parameters This enables "Store identifier in results enabled" to record one or more identifiers in the tightening results. This also means "Execute identifier enabled" used to activate or not the use of an identifier, e.g. to trigger an operation at identifier reception.	●	●	●	●
Change Fieldbus setup This means select another Fieldbus module: <ul style="list-style-type: none"> - No Fieldbus - CC Link - Device net etc... 	●	●	●	●

Functions	Operator	Production manager	Maintenance operator	Administrator
Controller software update This allows upgrading the software controller.	●	●	●	●
Set usage of ePOD This means set up ePOD port for controller backup, memory extension, customer features activation.	●	●	●	●
Change report formats This means select another report format: PC4/CS7500	●	●	●	●
Lock controller screen	●	●	●	●
Change calibration value	●	●	●	●
Change CVI CONFIG configuration	●	●	●	●
Use CVILogix	●	●	●	●

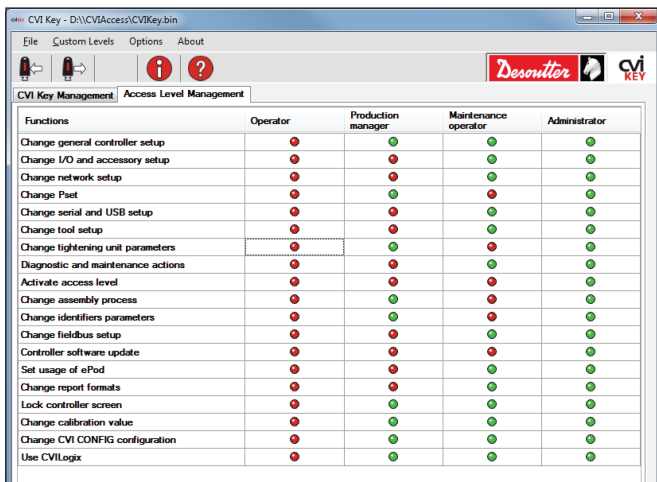


All display functions are always accessible whatever the access level:

- display of results, curves, statistics
- diagnostic information
- display of parameters (tightening unit, controller)

2 - HOW TO CREATE A PROFILE

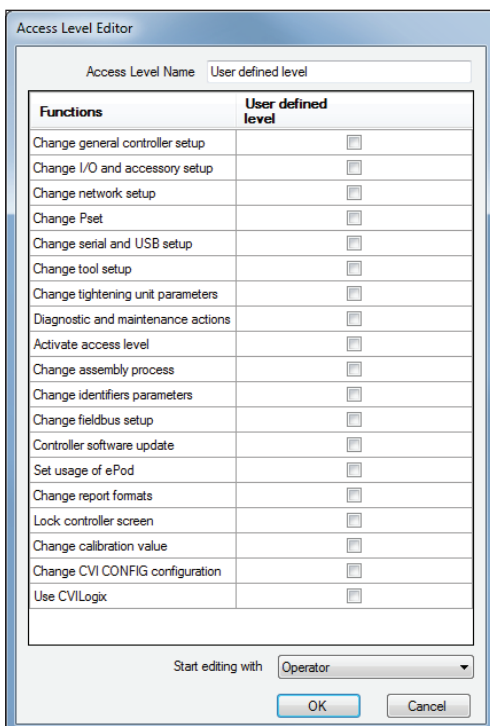
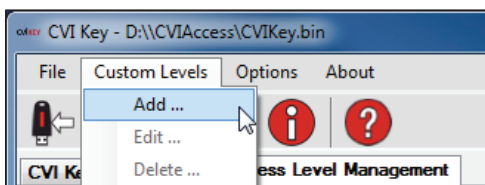
- Click "Access level management" tab.



This grid shows the rights pre-defined for each standard profile.

2.1 - Adding a profile

- Go to "Custom levels" and click "Add" to create a new profile.

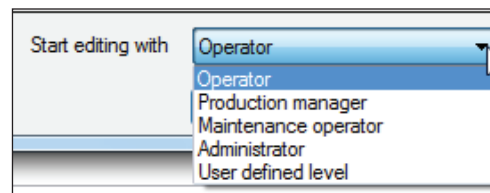


- Enter the name of the profile.



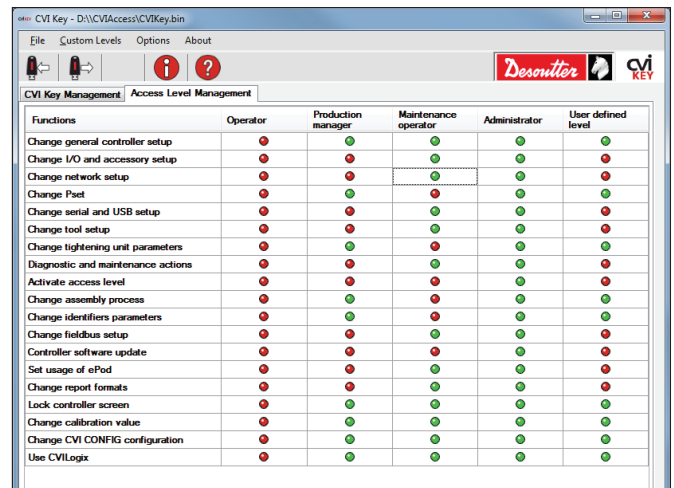
This name must be unique.

- If needed, select one of the existing profiles by clicking "Start editing with".



- In the grid, tick the functions you want for the new profile.
- Click "Ok" to validate.

The new profile is now added to the grid.



2.2 - Changing a profile

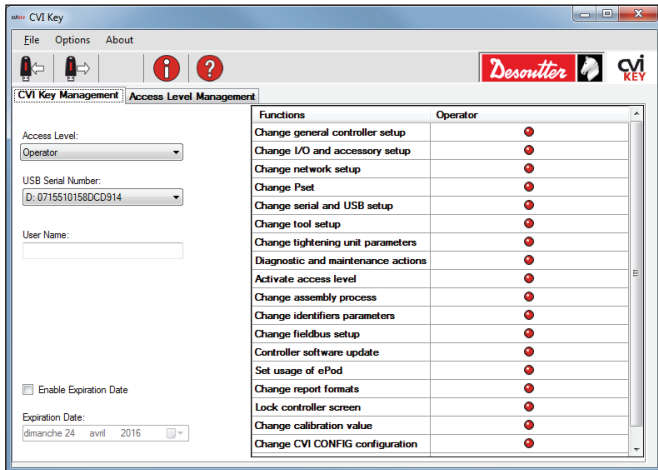
- Go to "Custom levels" and click "Edit" to display the list of the profiles you have added.
- Select the profile to edit and change the functions in the grid.
- Click "Ok" to validate.

2.3 - Deleting a profile

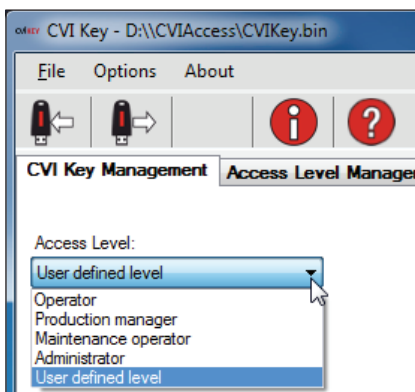
- Go to "Custom levels" and click "Delete" to display the list of the profiles you have added.
- Select the profile to delete.
- Click "Ok" to validate.

3 - HOW TO CREATE A USER KEY

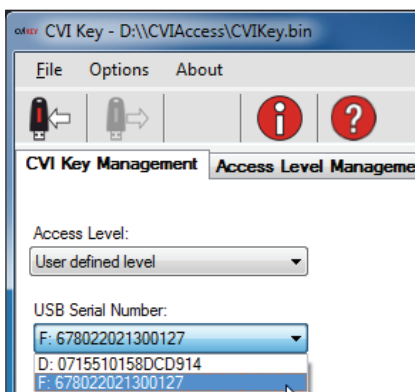
- Click "Access level management" tab.



- Click the "Access Level" box.



- Select the profile to display.
- Plug the USB user key to the computer.
- Click the "USB Serial Number" box.



- Select the USB serial number where to save the profile.



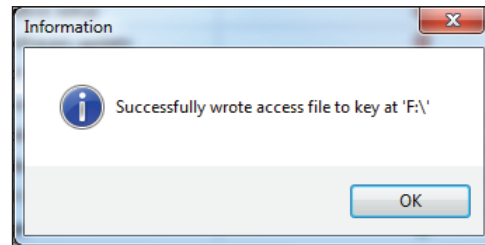
- Note the USB serial number of the software key to avoid mixing the serial numbers and save profiles on a wrong key.

- Give a name to the user key.
- Tick "Enable expiration date" to define a period of validity.



- Click this icon to save the profile on the user USB key. You will be asked to confirm.

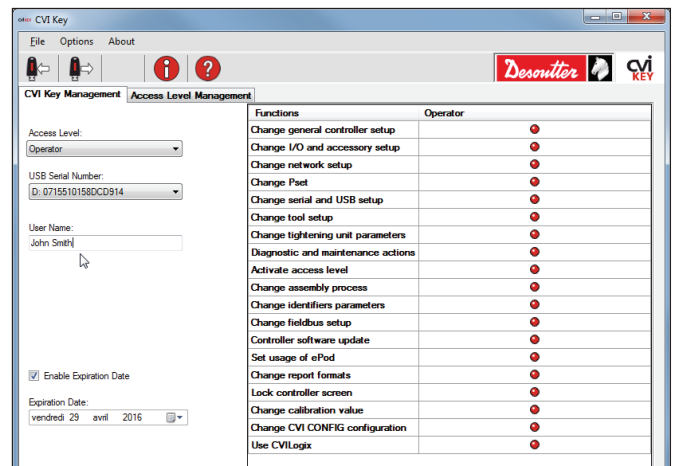
A pop-up is displayed to confirm that the writing is successful.



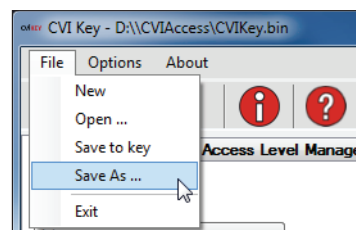
- Click "OK" to finish.

4 - SAVE YOUR PROGRAMMING

- Once a profile is done, save it for further use and before unplugging the CVI KEY usb stick.
- Select the profile to save.



- Click "File / Save as.." in the Menu area.



- Enter the file name.
- A *.bin file is created in "Libraries/Documents" by default.
- Click "Save".

More Than Productivity