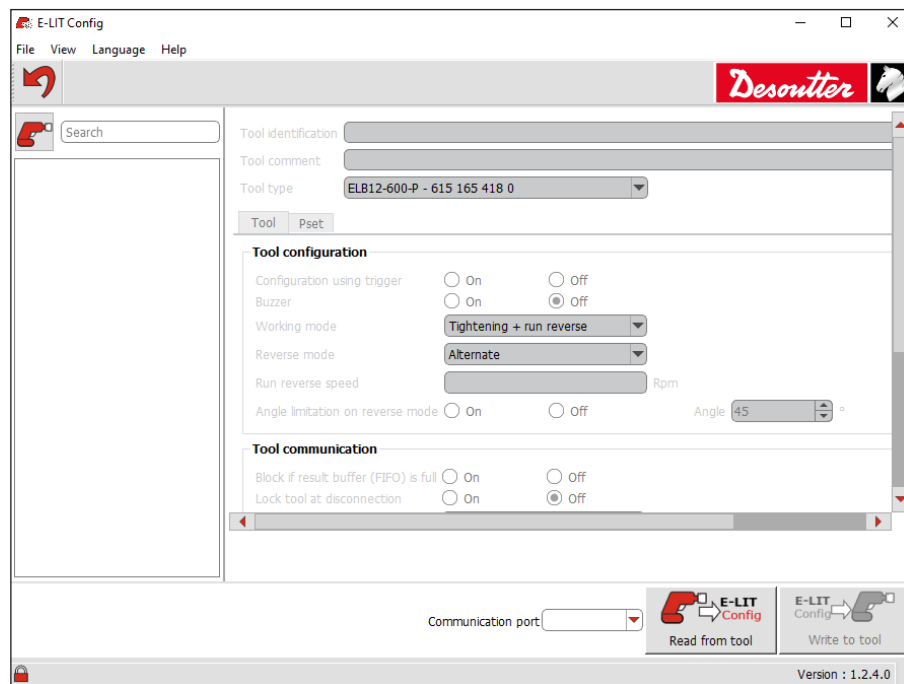


E-LIT CONFIG

V 1.2.5.X

User manual



Compatible with tools with serial number from 20BXXXXX

TABLE OF CONTENTS

1 - DESCRIPTION4

2 - LIST OF COMPATIBLE TOOLS4

3 - READ BEFORE STARTING.....4

- 3.1 - Recommended system requirements..... 4
- 3.2 - Checking the eDOCK and tool versions..... 4
- 3.3 - Reading the user manuals 4
- 3.4 - Compliance with IEC 62841 standard..... 5

4 - INSTALLING THE SOFTWARE.....5

5 - OVERVIEW7

- 5.1 - Overview 7
- 5.2 - How to change the language..... 8

6 - LIST OF TOOLS.....8

- 6.1 - Putting the tool in "Maintenance mode" 8
- 6.2 - How to create a tool 8
- 6.3 - How to read a connected tool..... 9

7 - TOOL CONFIGURATION9

- 7.1 - Configuration using trigger 9
- 7.2 - Buzzer 9
- 7.3 - Working mode 9
- 7.4 - Reverse mode 9
- 7.5 - Run reverse speed..... 10
- 7.6 - Angle limitation on reverse mode 10
- 7.7 - Update the tool 10

8 - TOOL COMMUNICATION 10

- 8.1 - Block if result buffer (FIFO) is full 10
- 8.2 - Lock tool at disconnection..... 10
- 8.3 - Update the tool 10

9 - PSET 10

- 9.1 - Strategies 10
 - 9.1.1 - Rehit prevention 10
 - 9.1.2 - Loosening at the end of the tightening... 10
 - 9.1.3 - Cross thread prevention..... 10
 - 9.1.4 - Result only after clutch setting 11
- 9.2 - Motor control 11

10 - TOOL ACCESSORY 11

11 - TOOL MAINTENANCE 12

- 11.1 - Information..... 12
- 11.2 - Maintenance alert..... 13

12 - WI-FI 14

- 12.1 - Network configuration..... 14
- 12.2 - Wireless parameters 14

13 - BACKUP 15

14 - TROUBLE-SHOOTING..... 15

- 14.1 - How to view the logs 15
- 14.2 - What if the tool is disconnected..... 15

Original instructions

© Copyright 2020, Ets Georges Renault 44818 St Herblain, FR

All rights reserved. Any unauthorized use or copying of the contents or part thereof is prohibited. This applies in particular to trademarks, model denominations, part numbers and drawings. Use only authorized parts. Any damage or malfunction caused by the use of unauthorised parts is not covered by Warranty or Product Liability.

1 - DESCRIPTION

E-LIT CONFIG software is used to configure the following features of the E-LIT series tools:

- configuration parameters
- communication parameters
- some specific strategies
- motor parameters
- parameters of special heads
- sub-counter
- preventive maintenance alarm
- Wi-Fi parameters

2 - LIST OF COMPATIBLE TOOLS

Tool model	Part number
ELS7-360-A4S	6151657250
ELS7-880-A	6151656280
ELS7-880-A10S	6151658880
ELS15-480-A	6151656290
ELS15-480-A4S	6151658390
ELS30-300-A	6151656300
ELS45-180-A	6151656310
ELS60-160-A	6151656320
ELC7-360-A4S-Z	6151657260
ELC7-880-A-Z	6151657070
ELC15-480-A-Z	6151657080
ELC15-480-A4S-Z	6151658400
ELC30-300-A-Z	6151657090
ELC45-180-A-Z	6151657100
ELC60-160-A-Z	6151657110
ELC7-360-A4S-W	6151661040
ELC7-880-A-W	6151661050
ELC15-480-A-	6151661060
ELC30-300-A-W	6151661070
ELC45-180-A-W	6151661080
ELC60-160-A-W	6151661090
ELB2.5-1250-P	6151654150
ELB6-670-P	6151654400
ELB6-900-P	6151654160
ELB8-670-P	6151654170
ELB12-600-P	6151654180

Tool model	Part number
ELS2.5-1550-P	6151654190
ELS6-1000-P	6151654200
ELS8-400-P	6151656050
ELS8-800-P	6151654210
ELS12-600-P	6151654220
ELS8-400-P4S	6151658250
ELS12-400-P4S	6151658260
ELC6-1000-P-Z	6151657010
ELC8-400-P-Z	6151657020
ELC8-800-P-Z	6151657030
ELC12-600-P-Z	6151657040
ELC6-1000-P-W	6151661000
ELC8-400-P-W	6151661010
ELC8-800-P-W	6151661020
ELC12-600-P-W	6151661030

3 - READ BEFORE STARTING

3.1 - Recommended system requirements

Connection to an Ethernet network.	
Administrator rights required for installation.	
Operating systems	- Windows 7 - Windows XP
Free disk space	150 Mo
Monitor resolution	1280 x 1024

3.2 - Checking the eDOCK and tool versions

- Locate the label on the left side of the eDOCK and check that the manufacturing year is 2014 minimum.
- Remove the battery pack and check that the manufacturing year is from 2015 on the tool footprint.

3.3 - Reading the user manuals

- To learn more about the behaviour of E-LIT tools, refer to the user manuals available at <http://resource-center.desouttertools.com>.



Tool model	User manual
E-LIT pistol tool	6159928480
E-LIT angle tool	6159928490

3.4 - Compliance with IEC 62841 standard

Hardware and firmware have been modified to be compliant with IEC 62841 standard.

Serial number of tools involved by this standard start at 20BXXXX.



This new firmware cannot be used with the previous E-LIT tools range.

E-LIT Config_1.2.5.0 supports both IEC and Non-IEC tools (Wi-Fi or not Wi-Fi).

This version detects hardware platform and select right files according to the tool hardware:

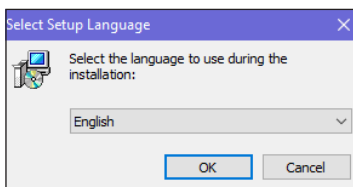
Tool hardware	Tool firmware	Tool Parameter
NON-IEC	MOT file	ECF file
IEC	ZIP file	ACF file

4 - INSTALLING THE SOFTWARE

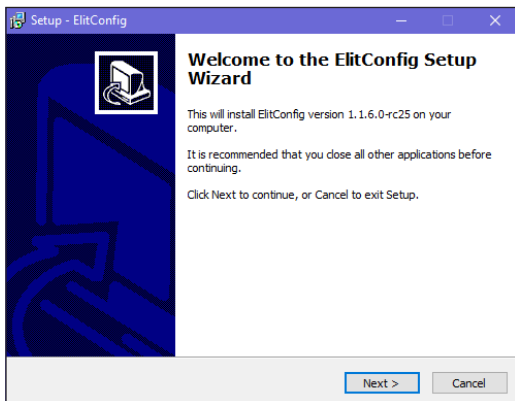


- Do not plug the eDOCK to the PC before installing the software.

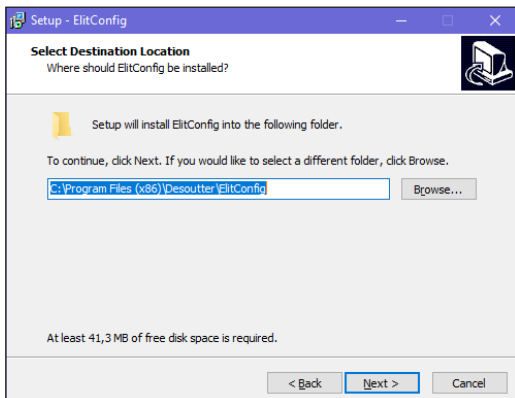
- Double-click "E-LIT CONFIG_X.X.X.X.exe".



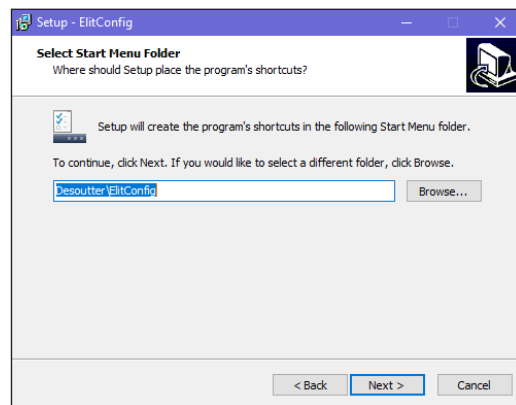
- Click "OK".



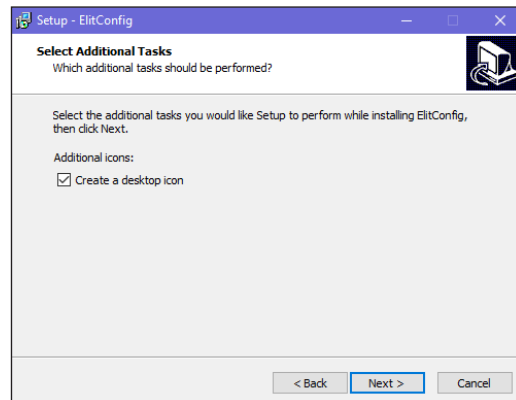
- Click "Next".



- Click "Next".

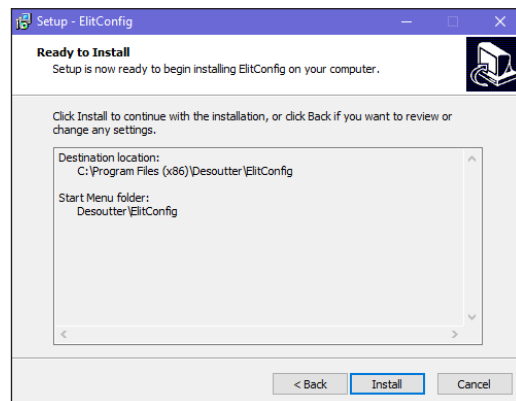


- Click "Next".

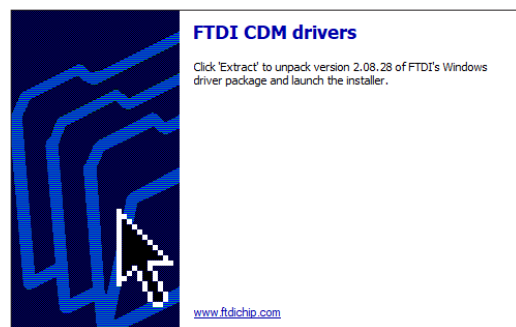


- Tick "Create a desktop icon".

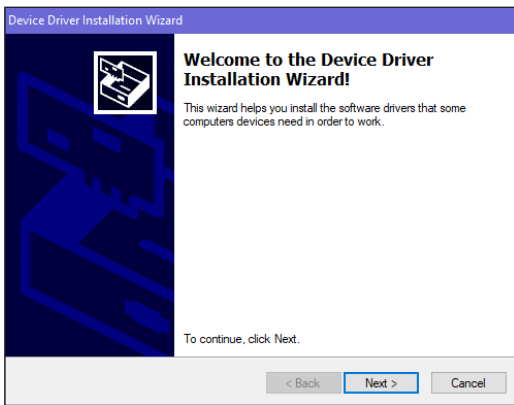
- Click "Next".



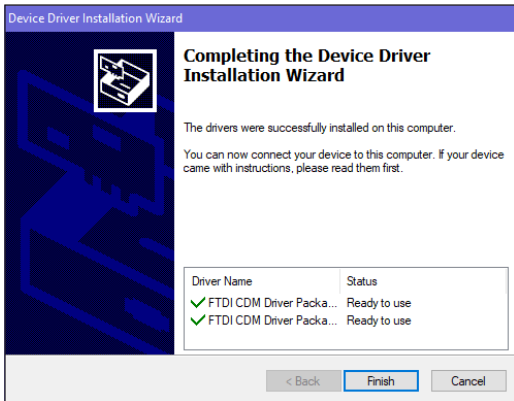
- Click "Install".



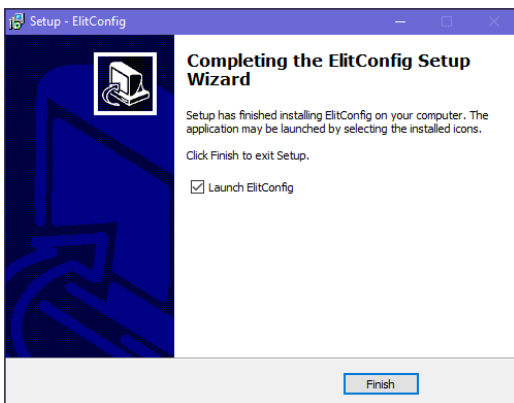
- Click "Extract".



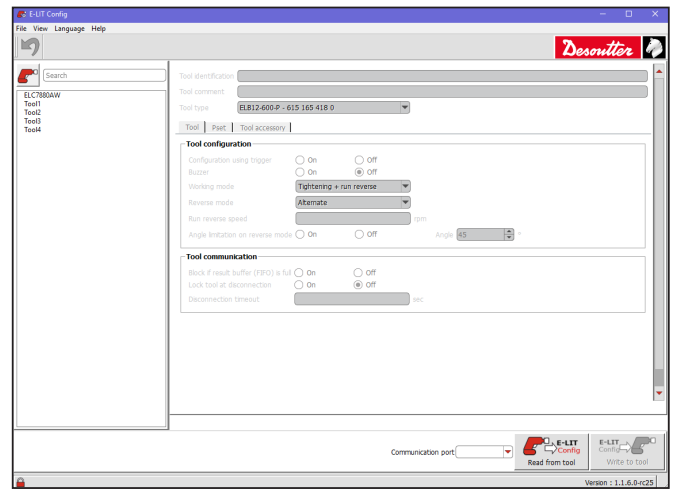
- Click "Next".



- Click "Finish".



- Click "Finish".



This icon is displayed in the Windows taskbar.

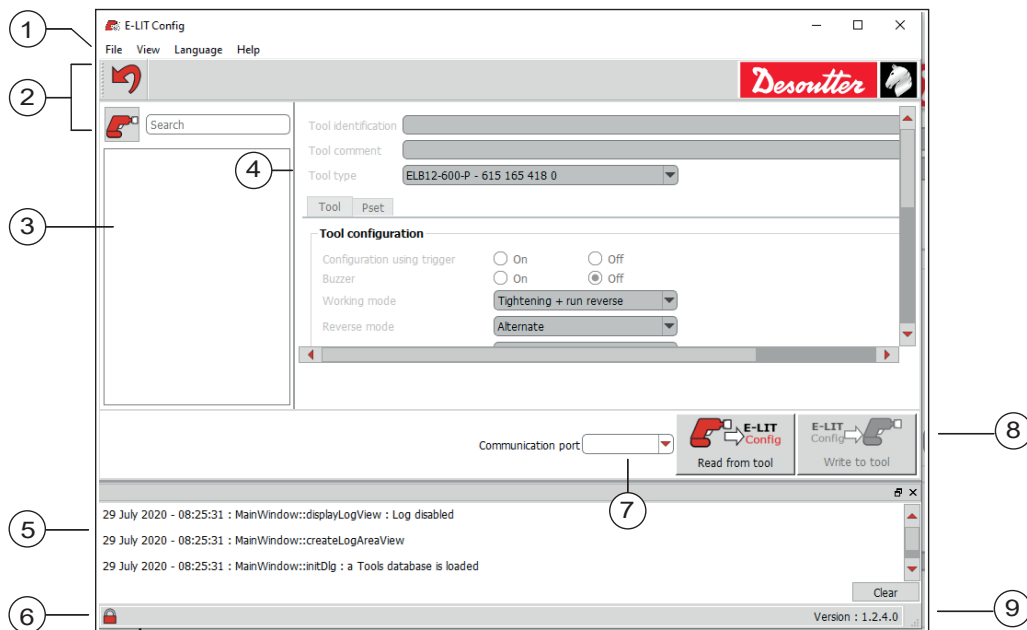
- Pin it to have it in the taskbar.

5 - OVERVIEW



- Click the icon in the taskbar to launch the program.

5.1 - Overview



- 1 Menu
- 2 Tool bar
- 3 List of tools
- 4 Configuration:
 - Tool
 - Pset
 - Tool accessory
 - Tool maintenance
 - WI-FI
- 5 Logs
- 6 Protection activated
- 7 Communication port
- 8 Read/Write buttons
- 9 Software version

- Click "Help" in the menu to display the user manual.
- To quit E-LIT CONFIG, go to the Menu and click "File / Exit".

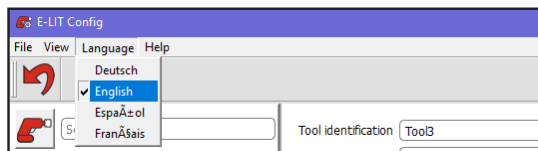


- Click this icon to cancel the last action.

5.2 - How to change the language

The language is set to "English" by default.
Any user can change the language at any time.
Available languages are as follows:

- German
 - English
 - Spanish
 - French
- Go to the menu bar and click "Language".



- Select your own language.

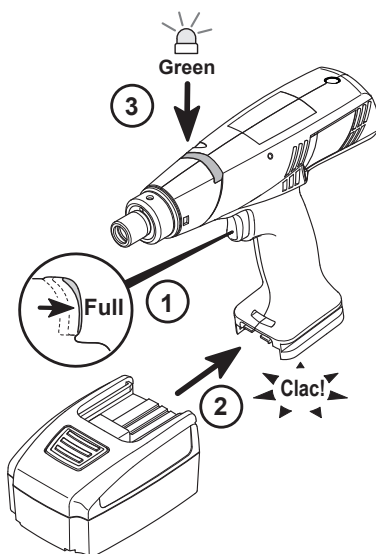
Changes are automatically applied.

6 - LIST OF TOOLS

6.1 - Putting the tool in "Maintenance mode"

- Check the battery pack is fully loaded.
- Put the tool in the "Maintenance mode".

For example:



- Connect the eDOCK to the PC USB port. A new serial port is created.

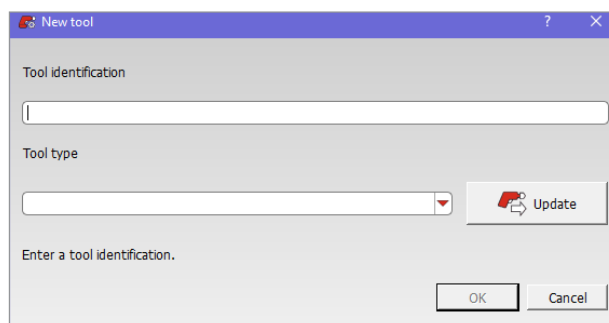


- Do not press the tool trigger before finishing the settings.

6.2 - How to create a tool



- Click this icon to create as many tools as you want.

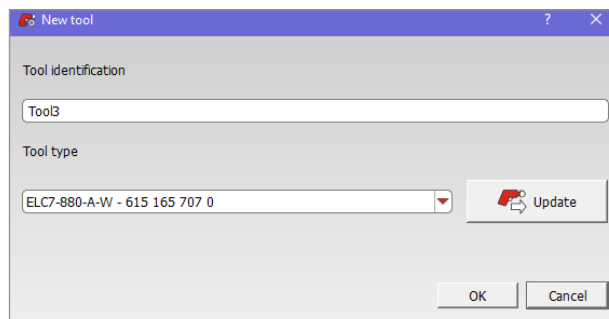


- Enter the identification of the tool as you like.

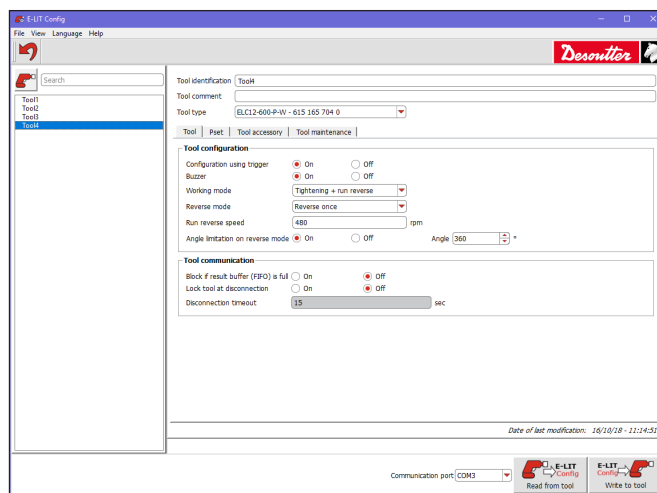


- Click "Update".

For example:



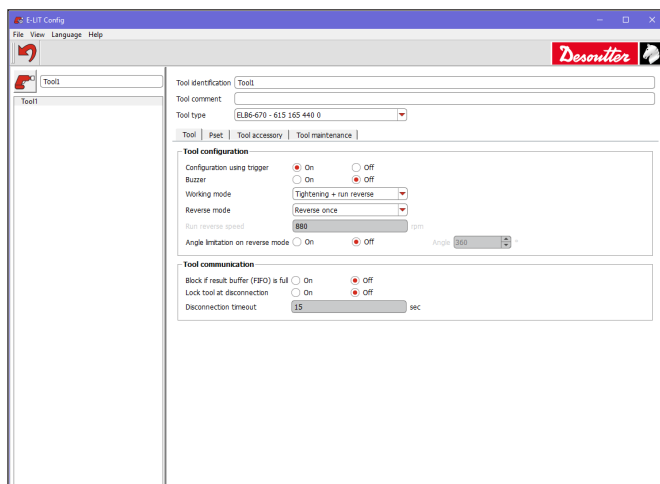
- Click "OK" to finish.
- See below the list of tools on the left.



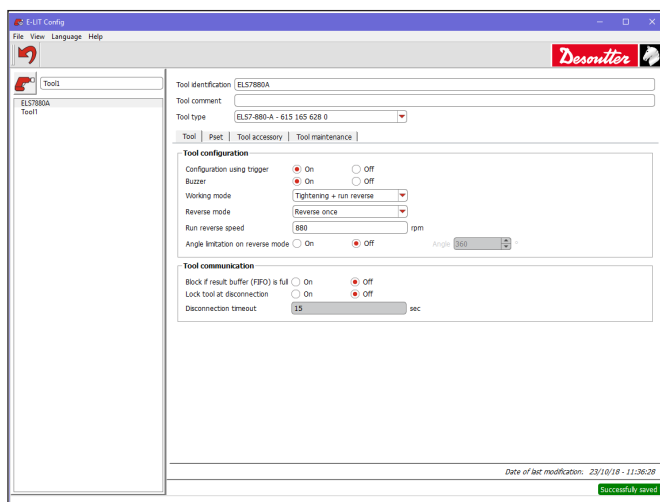
- Enter a comment about the tool (up to 40 characters). The following characters are prohibited: " ? < > &.

6.3 - How to read a connected tool

- Select the tool in the list or type the identification of the tool into "Search".
- Connect the tool.

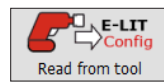


- Click this icon to update the screen.

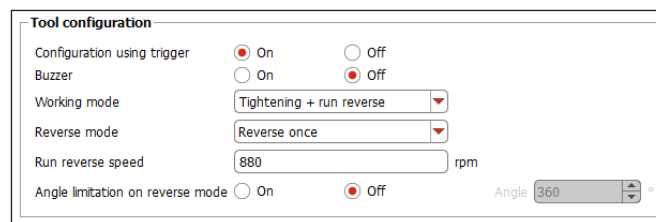


7 - TOOL CONFIGURATION

- Select the tool in the list.
- Before setting the configuration, click this icon to read the tool information and update the screen.



For example:



7.1 - Configuration using trigger

This configuration is set to "On" by default.

- Click "Off" to disable the configurations using the trigger and the reverse button.

For example:

- Battery check
- Buzzer
- Reverse mode

7.2 - Buzzer

This configuration is set to "On" by default.

- Click "Off" to disable the buzzer.

7.3 - Working mode

- Select the working mode of the tool.
- Tightening + run reverse (by default)
- Tightening only
- Run reverse only

7.4 - Reverse mode

- Select the reverse mode of the tool.

This configuration is set to "Reverse once" by default.

Reverse once	The tool starts in reverse direction when the operator presses the start trigger. Once the tool has run, the tightening direction is automatically re-activated.
Alternate	The tool starts in reverse direction when the operator presses the start trigger. Pushing again the reverse button, the tightening direction is selected.

7.5 - Run reverse speed

- Change the speed value (rpm) if required.

7.6 - Angle limitation on reverse mode

This configuration is set to "On" and to "360" degrees by default.

- Change the angle value.
- Or click "Off" to disable the feature.

7.7 - Update the tool



- Once the configuration is done, click this icon to update the tool.

8 - TOOL COMMUNICATION



This part is available for ELC tools only.

Tool communication	
Block if result buffer (FIFO) is full	<input type="radio"/> On <input checked="" type="radio"/> Off
Lock tool at disconnection	<input type="radio"/> On <input checked="" type="radio"/> Off
Disconnection timeout	<input type="text" value="15"/> sec

8.1 - Block if result buffer (FIFO) is full

The Wi-Fi cordless tool can keep up to 25 results previously generated.

When the option is enabled, the tool is locked as soon as the tool has generated offline 25 results.

In order to unlock the tool, results have to be read by a Desoutter system. This mechanism allows to ensure the traceability of all generated results.

When the option is disabled, the tool is able to generate offline more than 25 results.

Oldest results are overwritten by the newest results. No traceability can be ensured.

This configuration is set to "Off" by default.

- Click "On" to enable the feature.

8.2 - Lock tool at disconnection

When this option is enabled, the tool is locked as soon as the communication with a Desoutter system is lost.

When this option is disabled, the tool is able to process tightenings without a Desoutter system.

This configuration is set to "Off" by default.

- Click "On" to enable the feature.

8.3 - Update the tool



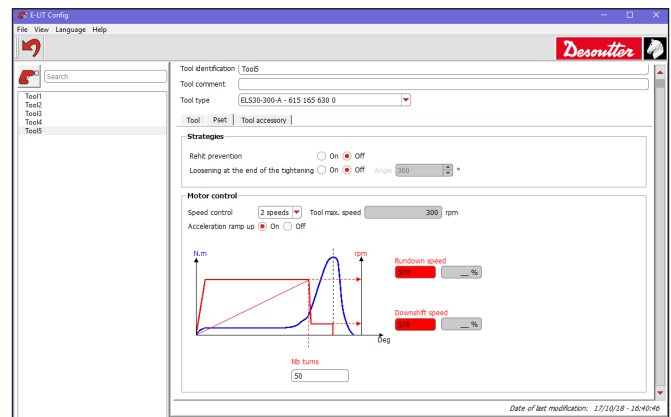
- Once the configuration is done, click this icon to update the tool.

9 - PSET

- Select the tool in the list.



- Before setting the configuration, click this icon to update the screen.



9.1 - Strategies

9.1.1 - Rehit prevention

This feature is used to prevent the operator from retightening the assembly.

- Click "On" to activate the feature.

9.1.2 - Loosening at the end of the tightening

This feature is used to release the constraint between the socket and the screw. When relaxation is enabled, the tool rotates in reverse a few degrees in order to easily remove the socket.

- Click "On" to activate the feature.
- Enter the angle value (increment of 45°).

9.1.3 - Cross thread prevention



This feature is available for ELC and ELS tools only.

- Click "On" to activate the feature.
- Enter the minimum number of turns before clutching.

For example: 5.

- If the clutch shuts off before this number, the report is NOK.
- If the clutch shuts off after, the report is OK.

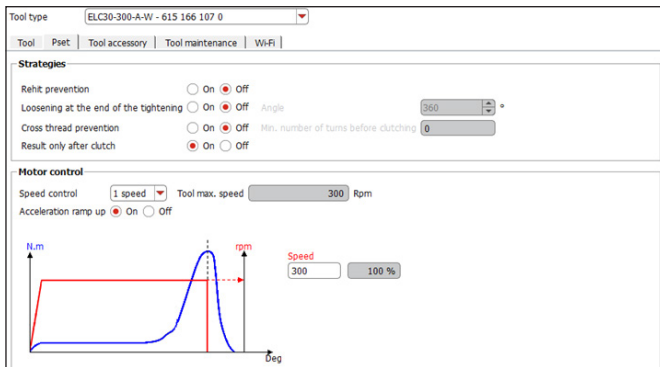


- Once the configuration is done, click this icon to update the tool.

9.1.4 - Result only after clutch setting

If "Result only after clutch" is set to "OFF" , then tool generates always a result (clutch or not)

If "Result only after tool clutch" is set to "ON" , then tool generates a result only after clutch.



For both cases, tool generates a led report.

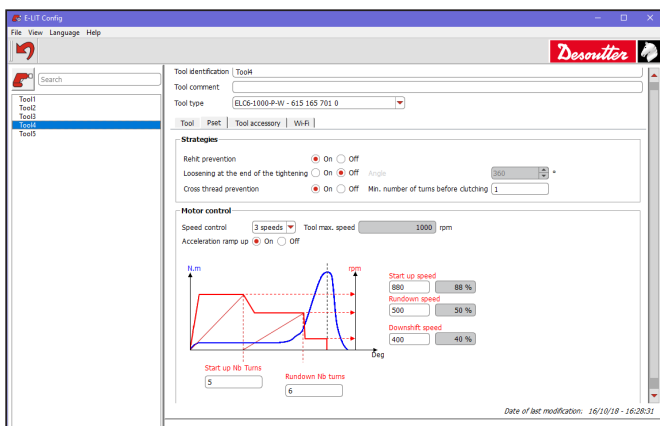
9.2 - Motor control



- Before starting the programming this part, refer to the tool user manual to understand the speed settings.



It is not possible to set the speed settings for ELB pistol tools.



Starting at the start signal, the tool runs with a programmed acceleration up to Rundown speed. The tool keeps running at Rundown speed. Once the number of turns has been reached, the speed changes to Downshift speed.

- Adjust the speeds and the number of turns if needed.



- Contact your local Desoutter representative for more information.



- Once the configuration is done, click this icon to update the tool.

10 - TOOL ACCESSORY



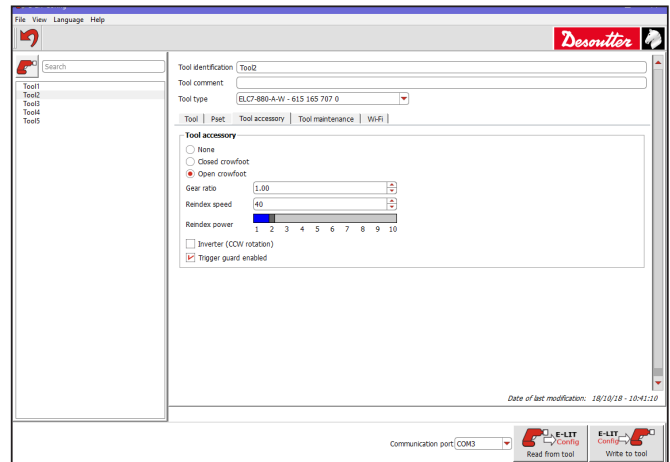
To activate the screen, you need to have a CVIKEY USB stick with the right profile (configured with the Desoutter CVIKEY software).

- If not, contact your CVIKEY manager for support.

- Select the tool in the list.




- Before setting the configuration, click this icon to update the screen.



- Select the type of accessory:

- None
- Closed Crowfoot
- Open Crowfoot

Gear ratio	The gear ratio is the ratio of the angular velocity of the input gear to the angular velocity of the output gear.
Reindex speed	When the tightening operation is ended, the operator needs to disengage the socket from the open Crowfoot and has to press again the trigger to re-index the socket in the open position.
Reindex power	Reindex power is used to avoid damaging the reindexing stop by limiting the reindexing torque. <ul style="list-style-type: none"> • First set the reindex power to a low value, then gradually increase it until the socket reaches the stop.
Inverter	<ul style="list-style-type: none"> • Click this option to declare that the accessory inverts the rotation direction of the tool (between the input and output shafts of the tool). <p>This parameter depends on the number of stages of the accessory:</p> <ul style="list-style-type: none"> - if odd number, the accessory is not inverted. - if even number, the accessory is inverted.

Trigger guard enabled	<p>The trigger guard is used to reduce the risk of pinching.</p> <p>When the trigger guard is enabled, the reverse button must be pressed to unlock the tool before pressing the trigger.</p> <p> Warning: to safely operate a tool equipped with an open Crowfoot, it is highly recommended to enable the "Trigger guard" option.</p>
-----------------------	---



- Contact your local Desoutter representative for more information.



- Once the configuration is done, click this icon to update the tool.

11 - TOOL MAINTENANCE



To activate the screen, you need to have a CVIKEY USB stick with the right profile (configured with the Desoutter CVIKEY software).

- If not, contact your CVIKEY manager for support.

- Select the tool in the list.



- Before setting the configuration, click this icon to update the screen.

11.1 - Information

Serial number	<p>For example: 16E64685.</p> <p>The serial number is located on the footprint of the tool.</p>
Total fastening counter	<p>Number of tightenings done since the manufacturing of the tool.</p>
Sub-counter	<p>Number of tightenings done since the last reset.</p> <ul style="list-style-type: none"> • Click "Reset sub-counter" to set the counter to 0. The transfer is immediately done to the tool.
Reset date	<p>Date of the last counter reset.</p>
Comment	<ul style="list-style-type: none"> • Enter a comment and click "Set comment". The transfer is immediately done to the tool.

11.2 - Maintenance alert



This part is available for ELC tools only.

When this feature is enabled, a Desoutter system can rise an alarm as soon as one of the following maintenance conditions is reached.

- Next maintenance date
- Sub-counter

The feature "Maintenance alert" is set to "Off" by default.

- Click "On" to activate the feature.
- Tick "Next maintenance date" and enter the date of the next maintenance planned. This date will trigger the alert.
- Tick "Sub-counter" and enter the number of tightenings to reach. This number will trigger the alert.



- Refer to the user manual of the tool to get more information about maintenance alert.

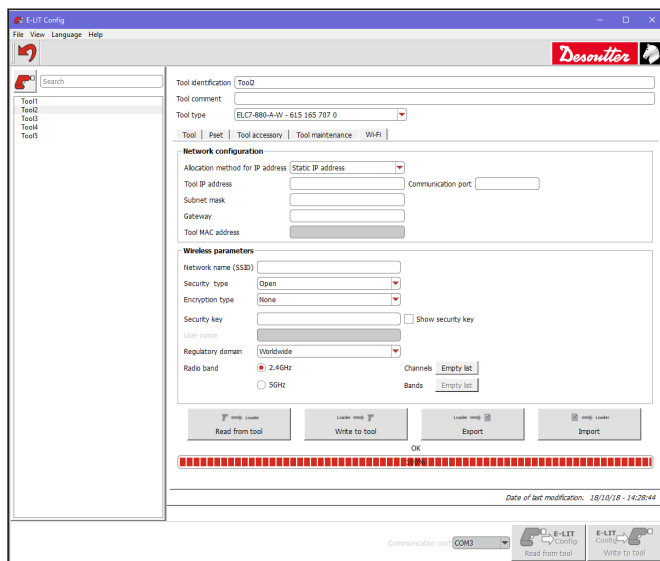
12 - WI-FI

- Select the tool in the list.



- Before setting the configuration, click this icon to update the screen.

For example:



When done, the progress bar is in red and "OK" is displayed.

12.1 - Network configuration

Parameters	Factory settings	Possible values
Allocation method for IP address	Static IP address	DHCP IP address
Tool IP address	-	-
Communication port	-	-
Subnet mask	-	-
Gateway	-	-
Tool MAC address	-	-

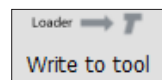
12.2 - Wireless parameters

Parameters	Factory settings	Possible values
Network name (SSID)	-	String of 255 characters
Security type	WPA/WPA2 PSK	WPA/WPA2 PSK Shared secret LEAP PEAP
Encryption type	AES/CCMP	AES/CCMP WEP64 WEP168 TKIP
Security key	-	String of 255 characters
User name	-	String of 255 characters

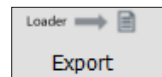
Parameters	Factory settings	Possible values
Regulatory domain	Worldwide	FCC (America) ETSI (Europe) TELEC (Japan)
Radio band	2.4 GHz	1 2.412 GHz
		2 2.417 GHz
		3 2.422 GHz
		4 2.427 GHz
		5 2.432 GHz
		6 2.437 GHz
		7 2.442 GHz
		8 2.447 GHz
		9 2.452 GHz
		10 2.457 GHz
		11 2.462 GHz
		12 2.467 GHz
		13 2.472 GHz
	5 GHz	U-NII band 1 (5.15-5.25GHz)
		U-NII band 2 (5.25-5.35GHz)
		U-NII band 2 ext (5.47-5.725GHz)
		U-NII band 3 (5.725-5.825GHz)



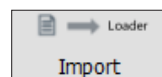
The security key is always hidden for security reasons.



- Once the configuration is done, click this icon to update the tool.



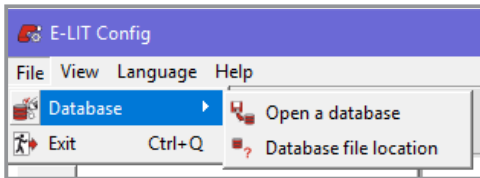
- Click "Export" to store the configuration in a "wifi_config.txt" file located in "C:\Program Files (x86)\Desoutter\ElitConfig\base" by default.



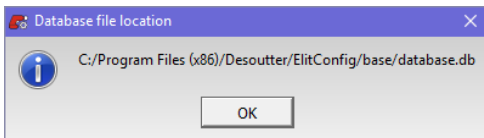
- Click this icon to browse files and to import a configuration file (.txt file) from "C:\Program Files (x86)\Desoutter\ElitConfig\base" by default.

13 - BACKUP

- Click "File/Database".



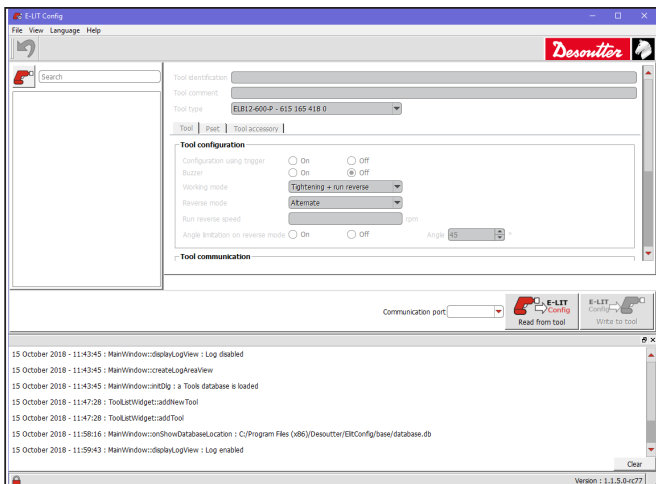
- Select "Open a database" to use a database which has been previously set up.
- Click "Database file location" to know where the database is stored.



14 - TROUBLE-SHOOTING

14.1 - How to view the logs

- Click "View" then "Logs" to display the events and their progression.



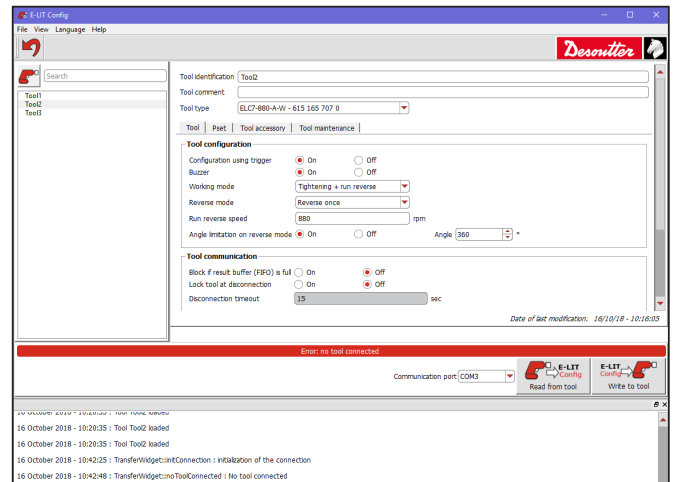
The last event is at the bottom of the list.

- Click "Clear" to erase the logs.

14.2 - What if the tool is disconnected

- It may happen that the tool is disconnected when clicking "Read from tool".

For example:



- Remove the eDOCK from the computer and from the tool.
- Unplug the battery pack and wait a few minutes.
- Put the tool in the "Maintenance mode" again.
- Plug the eDOCK to the tool and to the computer.

More Than Productivity