

Virtual Cable

Product Instructions

Model

Tracking Base

TRACKER-EABS

TRACKER-EABC

TRACKER-EPBC

Part number

6158133350

6158134150

6158132590

6158132600



Download the latest version of this document at
http://www.desouttertools.com/info/6159925540_EN

**⚠ WARNING****Read all safety warnings and instructions**

Failure to follow the safety warnings and instructions may result in electric shock, fire and/or serious injury.

Save all warnings and instructions for future reference

Table of Contents

Product Information	3
General Information.....	3
Warranty.....	3
Website	3
Information about spare parts	3
Dimensioning	3
CAD files	4
Overview	4
Description	4
Virtual cable	4
Technical data.....	5
Installation.....	7
Installation Requirements.....	7
Read before installing	7
Minimum firmware and software releases.....	7
Defining the Communications Settings for the Master Tracking Base	7
Updating the Tracking Base Firmware	9
Defining the Communications Settings for the Tracker	10
Updating the Tracker Firmware.....	11
Installation Instructions.....	12
Power supply and communication	12
Installation	13
How to read indicators	14
Operation.....	16
Configuration Instructions.....	16
How to set up Virtual cable	16
Operating Instructions	21
Using the Virtual cable solution.....	21
Troubleshooting	22
Troubleshooting for Virtual Cable.....	22

Product Information

General Information

WARNING Risk of Property Damage or Severe Injury

Ensure that you read, understand and follow all instructions before operating the tool. Failure to follow all the instructions may result in electric shock, fire, property damage and/or severe bodily injury.

- ▶ Read all Safety Information delivered together with the different parts of the system.
- ▶ Read all Product Instructions for installation, operation and maintenance of the different parts of the system.
- ▶ Read all locally legislated safety regulations regarding the system and parts thereof.
- ▶ Save all Safety Information and instructions for future reference.

Warranty

- Product warranty will expire in 12+1 months after dispatch from Desoutter's Distribution Center.
- Normal wear and tear on parts is not included within the warranty.
 - Normal wear and tear is that which requires a part change or other adjustment/overhaul during standard tool maintenance typical for that period (expressed in time, operation hours or otherwise).
- The product warranty relies on the correct use, maintenance, and repair of the tool and its component parts.
- Damage to parts that occurs as a result of inadequate maintenance or performed by parties other than Desoutter or their Certified Service Partners during the warranty period is not covered by the warranty.
- To avoid damage or destruction of tool parts, service the tool according to the recommended maintenance schedules and follow the correct instructions.
- Warranty repairs are performed only in Desoutter workshops or by Certified Service Partners.

Desoutter offers extended warranty and state-of-the-art preventive maintenance through its Tool Care contracts. For further information, contact your local Service representative.

For electrical motors:

- Warranty will apply, only when the electric motor has not been opened.

Website

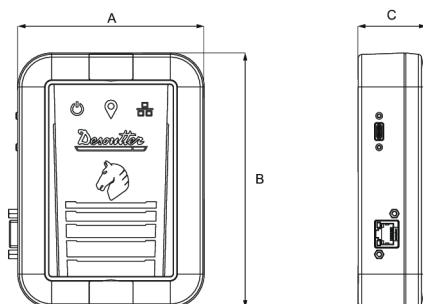
Information concerning our Products, Accessories, Spare Parts and Published Matters can be found on the Desoutter website.

Please visit: www.desouttertools.com.

Information about spare parts

Exploded views and spare parts lists are available in Service Link at www.desouttertools.com.

Dimensioning



	mm	in.
A	110	4.33
B	150	5.90
C	40	1.57

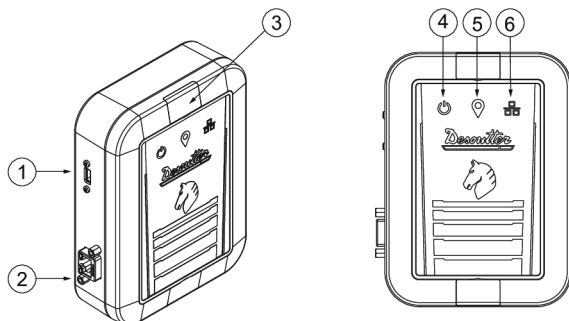
CAD files

For information about the dimensions of a product, see the Dimensional drawings archive:

<https://www.desouttertools.com/resource-centre>

Overview

Description



1	USB-C
2	Ethernet/Ethernet PoE
3	Mounting screw access door
4	Power supply indicator
5	UWB indicator
6	Ethernet / USB indicator

Virtual cable

Virtual cable is a Desoutter solution based on the UWB (Ultra-Wide Band) technology.

It prevents the operator from using the tool outside a predefined area, named **Working space**.

It is composed of a **Master tracking base** connected to CONNECT and of tools equipped with **trackers** (TRACKER-EABC, TRACKER-EPBC and TRACKER-EABS).

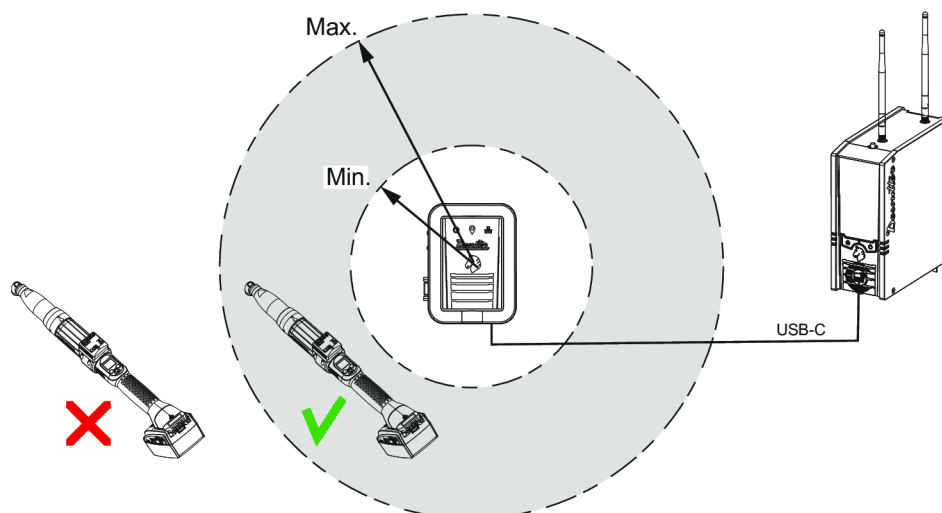
The coordinator tracking base can manage 128 ID in total. For example:
the tracking base coordinator can manage 15 tracking bases and each tracking bases (coordinator & maters) can manage 8 trackers

All devices (tracking bases, trackers) must be inside 15/20 m (49/65 feet) radius from the Master tracking base.

Extra UV equipment is required.

Example of installation -1 working space

The Master tracking base is connected to CONNECT via USB-C.



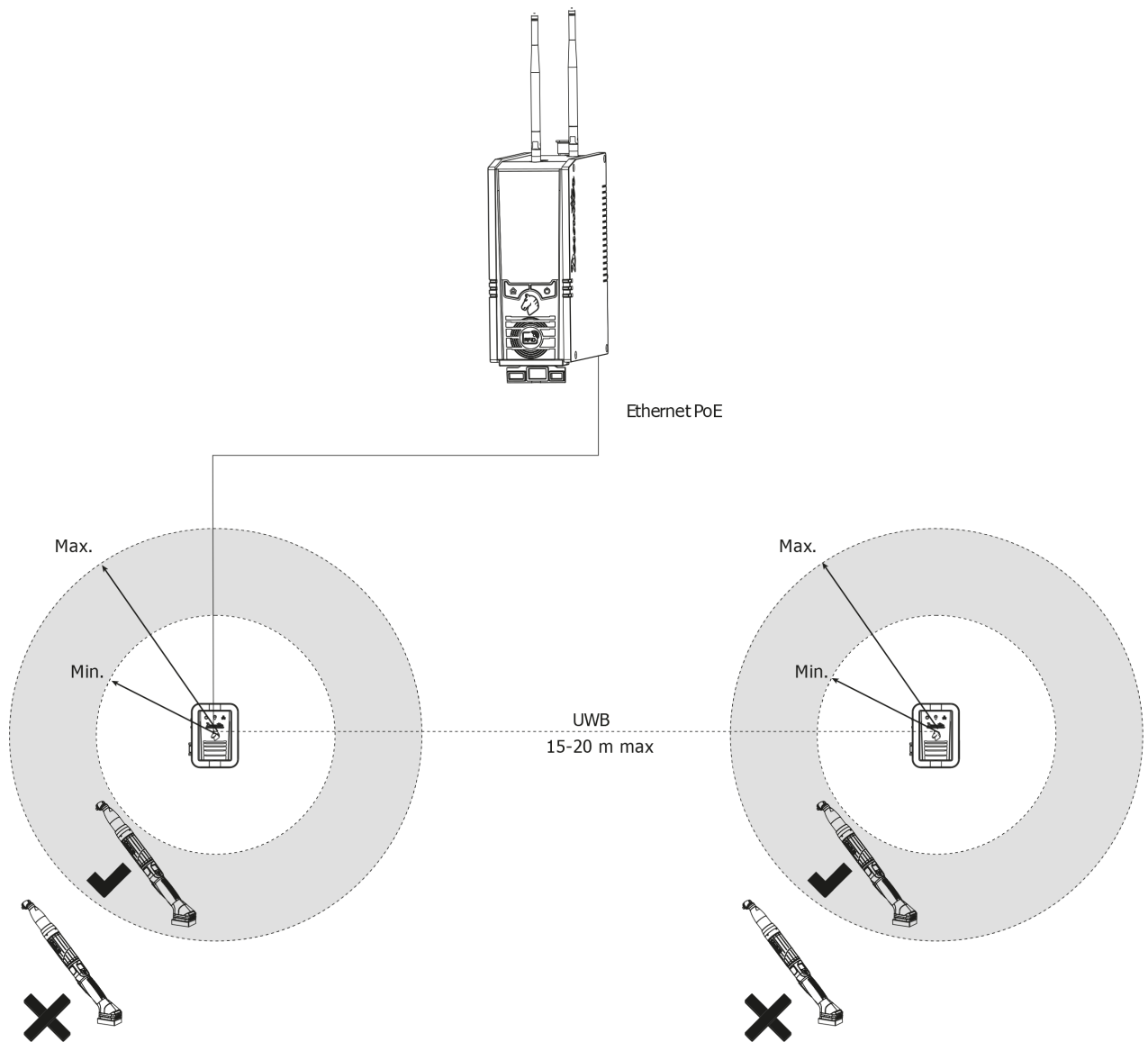
Example of installation - 2 working spaces

The Master tracking base is connected to CONNECT via Ethernet.


The tracking base is powered by an external USB-C (5 V).

The tracking bases communicate via UWB.

Depending on the configuration of the workstation, the distance between the tracking bases cannot exceed 15-20 m (49/65 feet).

**Technical data****Power supply**

PoE: 48 V 

USB-C: 5 V 

Product Information

Power consumption

PoE

20 mA

LPS (Limited Power Source) on PoE power supply

Maximum PoE power supplied: 15.4 W

USB-C

180 mA

Weight

0.280 kg

0.62 lb

Storage and use conditions

Storage temperature	-20° to +70°C (-4 F to +158 F)
Operating temperature	0 to 45 °C (32 F to 113 F)
Storage humidity	0-95 % RH (non-condensing)
Operating humidity	0-90 % RH (non-condensing)
Altitude up to	2000 m (6562 feet)
Usable in Pollution degree 2 environment	
IP54	
Indoor use only	

Wireless Communication specifications

Frequency: 3.2 – 7.0 GHz

Maximum power - 0.831 dBm

Installation

Installation Requirements

Read before installing

- Coordinator tracking base is necessary to establish a virtual cable system.
- Coordinator tracking base has its ID =0.
- 128 ID can be managed by a coordinator tracking base for one frequency channel
- An ID is associated with a tracker or a master tracking base or a slave tracking base Master tracking base is necessarily connected to the CONNECT, with ID \neq 0.
- Trackers mounted on tools must be always visible by the master tracking base (within 15/20 m)
- Slave tracking base must be always visible by the master tracking base (within 15/20 m)
- Slave tracking base can manage working area for a tracker, the distance of the working area is calculated from the slave tracking base.
- Avoid metallic structure between trackers and tracking bases.
- The maximum distance is 5 m between the master tracking base and the CONNECT with the USB communication
- We recommend installing tracking base at 2 meters/2.5 meters above the floor for a better visibility.

i Other UWB systems may interfere with communication used between trackers and tracking base.
The UWB radio channel used for communication can be modified by using CVIMONITOR.

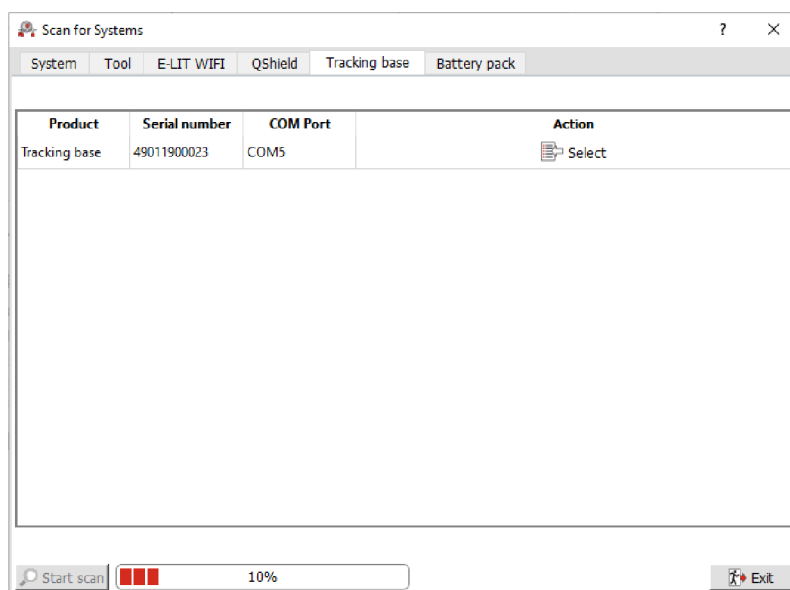
Minimum firmware and software releases

Product	Release
CONNECT	V 2.1.5.x
CVI CONFIG	V 2.3.4.x
CVIMONITOR	V 1.7.8.x

Defining the Communications Settings for the Master Tracking Base

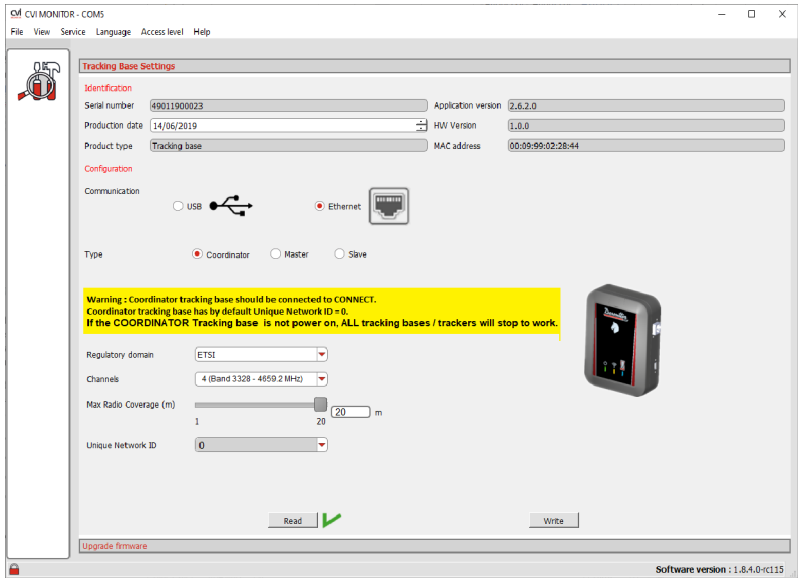
Before installing the Master tracking base in the workstation, check its communication settings.

1. Plug the USB-C cable from the Master tracking base to the computer where CVIMONITOR is installed.
2. Launch the CVIMONITOR. For *Minimum firmware and software releases* [Page 7]

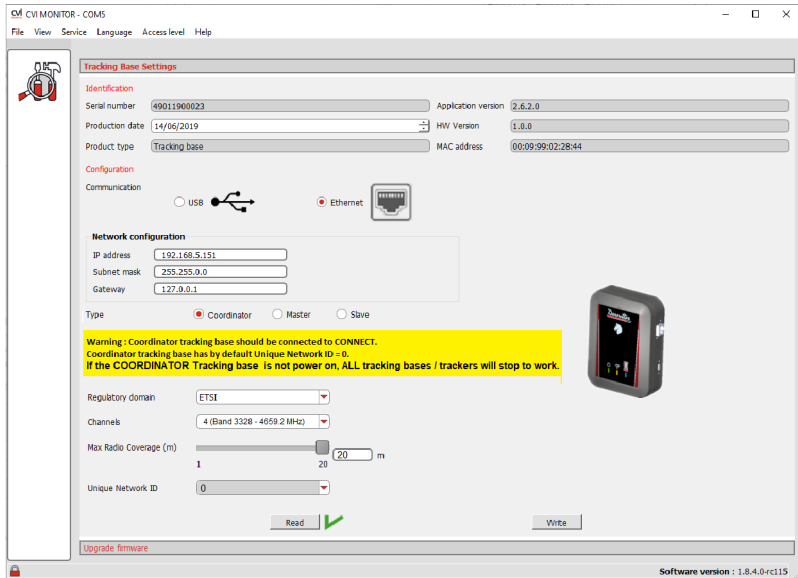


3. Click the tab **Tracking base**.

4. When the tracking base is displayed, click **Select**.



5. Select **USB** if the tracking base has to be connected physically to the USB port of CONNECT. Click **Write**.



6. Select **Ethernet** if the tracking base has to be connected to the Ethernet port of CONNECT. Enter the IP address of the tracking base (192.168.5.151 by default), its sub-net mask (255.255.255.0 by default) and the gateway (127.0.0.1 by default). Click **Write**.

7. Write down the tracking base's MAC address. This information is **mandatory** for virtual system configuration with CONNECT or CVI CONFIG.

The UWB radio channel used is set to 2 by default (band 3774 – 4243.2 MHz). UWB radio channel possibilities are:

Tracking Base Model	UWB Channel	Region
FCC	Channel 1 (band 3244.8 - 3744 MHz)	FCC (US & Canada)
FCC, CE	Channel 2 (band 3774 - 4243.2 MHz)	ETSI (Europe) and FCC (US & Canada)
FCC, CE	Channel 3 (band 4243.2 - 4742.4 MHz)	ETSI (Europe) and FCC (US & Canada)
FCC, CE	Channel 4 (band 3328 - 4659.2 MHz)	ETSI (Europe) and FCC (US & Canada)
FCC, CE	Channel 5 (band 6240 - 6739.2 MHz)	ETSI (Europe) and FCC (US & Canada) and SRRC (China)
FCC	Channel 7 (band 5980.3 - 6998.9 MHz)	FCC (US & Canada)

Tracking base model type:

Tracking Base Model Type	Tracking Base Serial Number Index	Date of Production
CE only	4900xxxxxxx to 4903xxxxxxx From index = 0 to 3	before 2021
CE & FCC	4904xxxxxxx and later From index = 4	after 2021

Select tracking base type (Coordinator by default), the max radio coverage (20 meters by default) and unique network ID (0 by default).

Network ID = 0 defines the Coordinator Tracking Base. If the Coordinator Tracking Base is not powered on, ALL tracking bases (Master / Slave) and trackers will stop working.

Only with tracking base firmware version 2.7 or later, if the coordinator tracking base is not powered on then a Master tracking base is automatically elected as the new Coordinator. In this case ALL tracking bases (Master / Slave) and trackers will continue to work.

	Tracking base firmware version < 2.7.x	Tracking base firmware version > 2.7.x
Tracking base Coordinator is power OFF	Tracking base master is waiting a new tracking base coordinator	Tracking base master with the lowest ID become tracking base coordinator and virtual cable network continue to work

Coordinator tracking is identified with fast blinking UWB indicator.

Coordinator and Master Tracking bases require a connection (USB or Ethernet) with a CONNECT and a power supply to work. The power supply can be provided by:

- USB communication
- Ethernet (if CONNECT is PoE): Manufacturing date after May 2019.
- PoE injector: 6158132630.

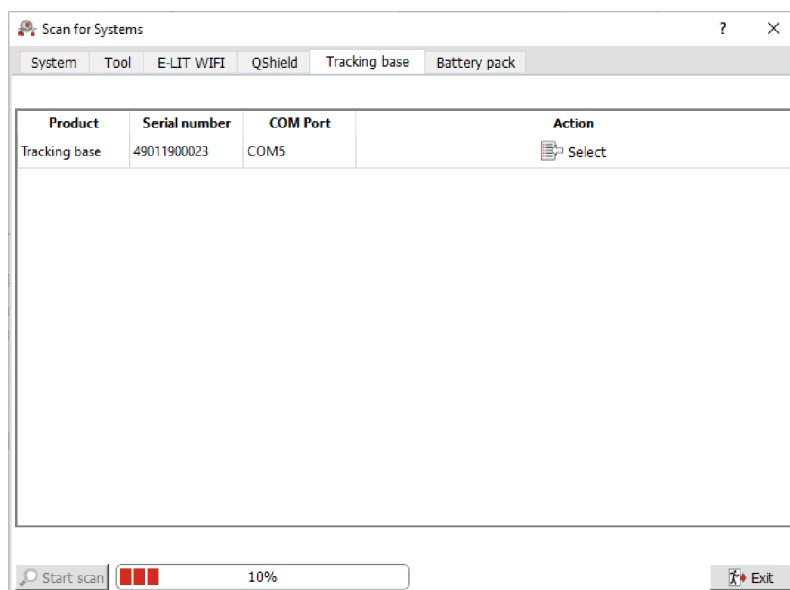
Network ID configuration will be applied only for Master Tracking bases.

Slave Tracking base depends on the Master Tracking base. Slave Tracking base only requires a power supply to operate.

Updating the Tracking Base Firmware

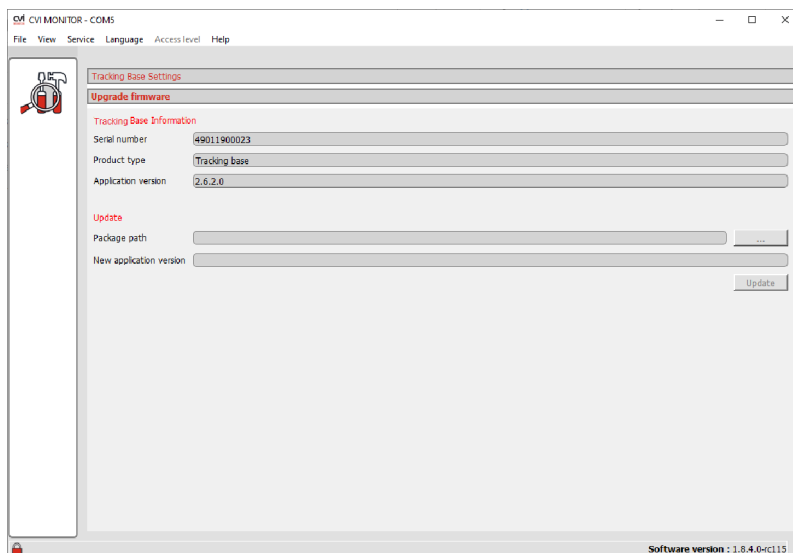
Before installing the Master tracking base in the workstation, check the tracking base firmware version.

1. Plug the USB-C cable from the Master tracking base to the computer where CVI MONITOR is installed.
2. Launch the CVI MONITOR.



3. Click the tab **Tracking base**.
4. Select the tracking base.

5. Select Upgrade firmware panel.



6. Connect the CVI Key with the correct production setup.

7. Press **...** button and Select Tracking base ZIP package.

i Tracking base ZIP package can be found on Desoutter support library available at:

https://onevirtualoffice.sharepoint.com/teams/CPD-N_RD/SitePages/Virtual%20Cable.aspx

8. Press **Update** button.

9. A progress bar is displayed to show the update progress status.

Defining the Communications Settings for the Tracker

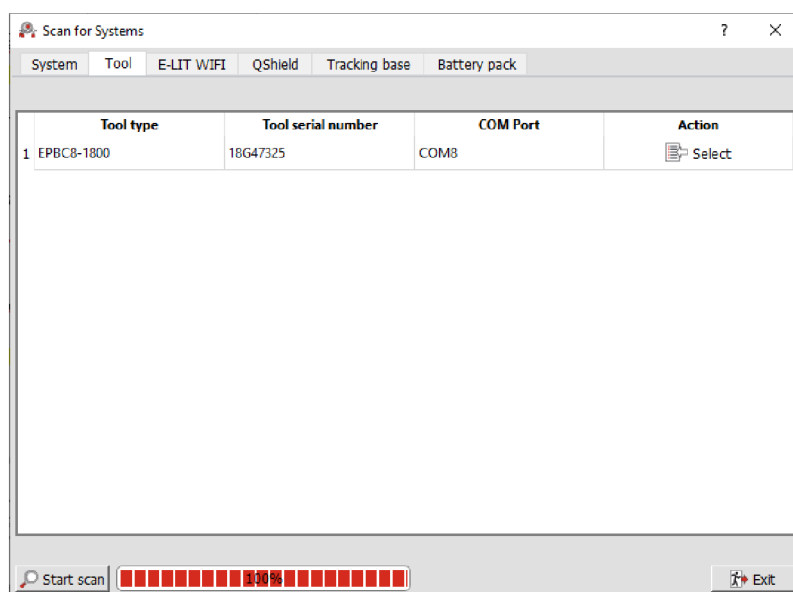
Before using the tracker in the workstation, first check the correct installation on the tool.

i Refer to the Safety Instructions of Tracker (TRACKER-EABS, TRACKER-EABC , TRACKER-EPBC) available at:

<https://www.desouttertools.com/resource-centre>.

After that check its communication settings.

1. Plug the USB-C cable from the tool with tracker to the computer where CVI MONITOR is installed.
2. Launch the CVI MONITOR.



3. Select the tool.

4. Select tool identification tab.

5. Plug a CVI Key with change tool setup right.
6. Declare Tracker accessory on tool.

eLINK modules definition

☐ None
 ☐ Barcode reader
 ☐ I/O accessory
 ☒ Tracker

☒ Front light
 ☐ Motor direction same as tool

eLINK modules configuration

Channels: 4 (Band 3328 - 4659.2)

MAC address: 00:09:99:02:28:0B

7. Write down the tracker **MAC address**.
8. This information is **mandatory** for virtual system configuration with CONNECT or CVI CONFIG.
9. The UWB radio channel used is set to 2 by default (band 3774 – 4243.2 MHz). UWB radio channel possibilities are:

UWB Channel	Region
Channel 1 (band 3244.8 - 3744 MHz)	FCC (US & Canada)
Channel 2 (band 3774 - 4243.2 MHz)	ETSI (Europe) and FCC (US & Canada)
Channel 3 (band 4243.2 - 4742.4 MHz)	ETSI (Europe) and FCC (US & Canada)
Channel 4 (band 3328 - 4659.2 MHz)	ETSI (Europe) and FCC (US & Canada)
Channel 5 (band 6240 - 6739.2 MHz)	ETSI (Europe) and FCC (US & Canada) and SRRC (China)
Channel 7 (band 5980.3 - 6998.9 MHz)	FCC (US & Canada)

i UWB radio channel used should be the same between tracker and tracking base.

Updating the Tracker Firmware

Before installing the tracker in the workstation, check the tracking base firmware version.

1. Plug the USB-C cable from the tool with tracker to the computer where CVI MONITOR is installed.
2. Launch the CVI MONITOR.

Scan for Systems

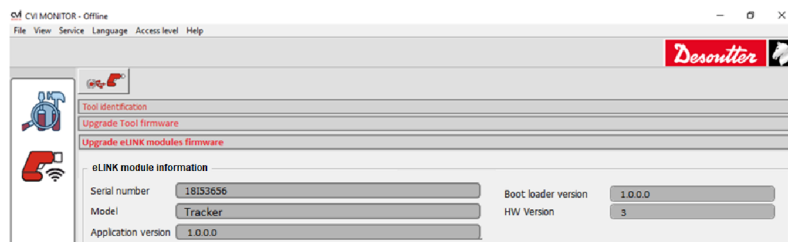
System Tool E-LIT WIFI QShield Tracking base Battery pack

	Tool type	Tool serial number	COM Port	Action
1	EPBC8-1800	18G47325	COM8	Select

Start scan 100% Exit

3. Select the tool.

4. Select Upgrade eLINK modules firmware tab.

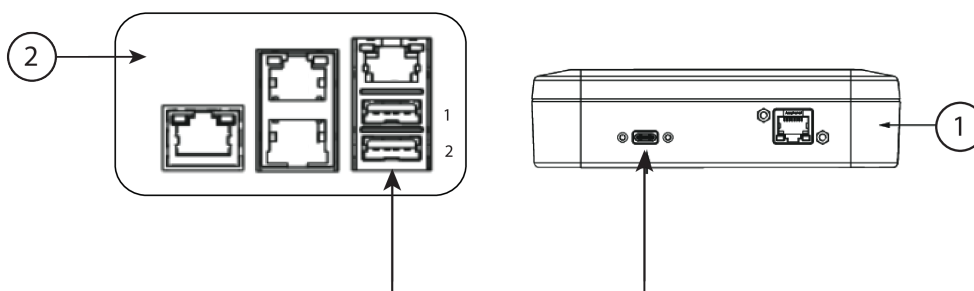


5. Connect the CVI Key with the correct production setup.
6. Press **...** button and Select Tracker base ZIP package.
 - ❗ The Tracker Base ZIP package can be found on Desoutter support library available at: https://onevirtualoffice.sharepoint.com/teams/CPD-N_RD/SitePages/Virtual%20Cable.aspx
7. Press **Update** button.
8. A progress bar is displayed to show the update progress status.

Installation Instructions

Power supply and communication

Via USB-C



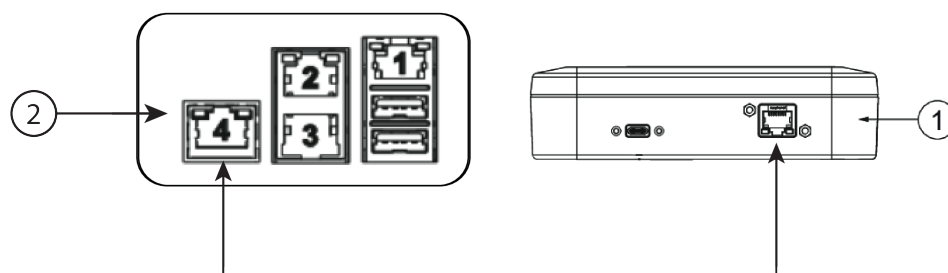
1	Tracking base
2	Connect-X 6159327220 (to be ordered separately) Connect-Y 6159327230 (to be ordered separately)
3	Computer (For service)

Connect the **USB3.0 A to C** cable (not supplied) into the tracking base and connect the other end to any USB port on CONNECT.

- ❗ Both power supply and communication are provided.

Via Connect PoE injector

- ❗ The PoE injector is not supplied.



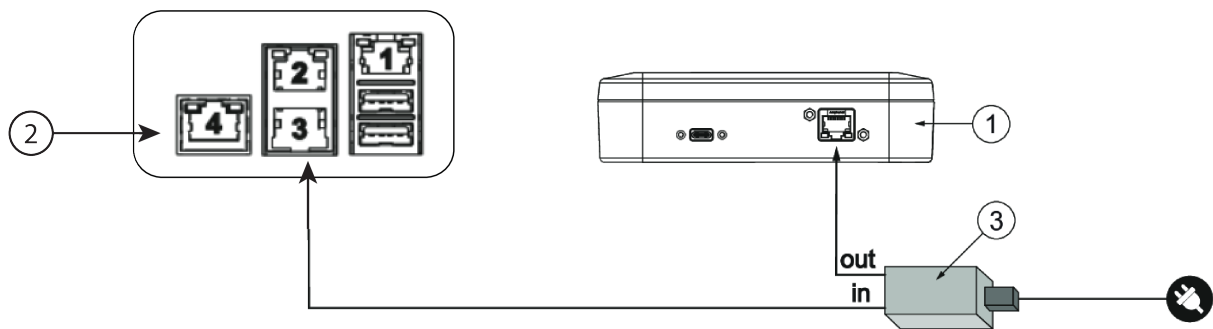
1	Tracking base
2	Connect-X 6159327220 (to be ordered separately)
	Connect-Y 6159327230 (to be ordered separately)

Plug an Ethernet cable to the PoE injector (in) and to the Ethernet port of the tracking base.

Plug an Ethernet cable to the PoE injector (out) and to CONNECT.

Via external PoE injector

i The PoE injector is not supplied.



1	Tracking base
2	CONNECT inside panel: Port 4
3	External PoE injector: 6158132630

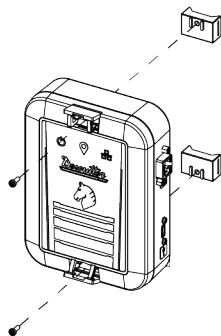
Plug an Ethernet cable to the PoE injector (in) and to the Ethernet port of the tracking base.

Plug an Ethernet cable to the PoE injector (out) and to CONNECT.

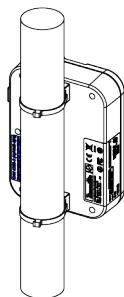
Installation

Before installing the tracking base, refer to the instructions given in the chapter *Read before installing [Page 7]* in this manual.

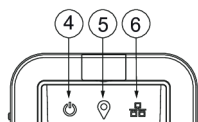
1. Open the mounting screw access door located on the front panel of the tracking base.
2. Place the M4 Torx screw and the bracket (supplied) as shown below.
Tighten the screw by hand.



- Run a Nylon cable tie (not supplied) through the bracket and fix it at the chosen location.
For example:



How to read indicators



When Tracking base is **Coordinator**:

Item	Indicator	Description
4	Power supply indicator	This LED lights up in White and remains steady when the power supply is correctly provided.
5	UWB indicator	This LED shows UWB communication status: <ul style="list-style-type: none"> Blue (Fast Blinking): communication between Tracking base/Tracker is not functional Green (Fast Blinking): communication between Tracking base / Tracker is functional.
6	Ethernet / USB indicator	This LED shows Ethernet / USB communication status between Tracking Base and CONNECT. When Ethernet /USB communication has been established, this LED lights up in Blue and remains steady. A Coordinator can be also used to only synchronize UWB devices. In this case Ethernet/ USB can be not used.

When Tracking base is **Master**:

Item	Indicator	Description
4	Power supply indicator	This LED lights up in White and remains steady when the power supply is correctly provided.
5	UWB indicator	This LED shows UWB communication status: <ul style="list-style-type: none"> Red (Steady): settings issue between Master Tracking base / CONNECT. Blue (Blinking):communication between Master Tracking base/ Slave Tracking base or Tracker is not functional. Green (Blinking): communication between Master Tracking base/ Slave Tracking base or Tracker is functional.
6	Ethernet / USB indicator	This LED shows Ethernet / USB communication status between Tracking Base and CONNECT. When Ethernet /USB communication has been established, this LED lights up in Blue and remains steady. A Coordinator can be also used to only synchronize UWB devices. In this case Ethernet/ USB can be not used.

Only with tracking base firmware version 2.7 or later, if the coordinator tracking base is not power on then a Master tracking base is automatically elected as the new Coordinator.

When Tracking base is **Slave**:

Item	Indicator	Description
4	Power supply indicator	This LED lights up in White and remains steady when the power supply is correctly provided.
5	UWB indicator	This LED shows UWB communication status: <ul style="list-style-type: none">• Red (steady): settings issue on Master Tracking base / Slave tracking base.• Blue (steady): communication between slave Tracking base / Tracker is not functional.• Green (steady):communication between slave Tracking base / Tracker is functional.
6	Ethernet / USB indicator	Not used.

Operation

Configuration Instructions

How to set up Virtual cable

Read before starting

1. Tightening tools are equipped with trackers.
Each tightening tool has been associated to a tightening unit and is ready to run a Pset.
 2. Trackers have to be declared in CONNECT.
 3. The Master tracking base has to be set up with CONNECT.
 4. Working spaces can be set up by using CONNECT or CVI CONFIG.
- ❗ Note the MAC addresses of tracker and tracking base and keep them available.
The MAC address of the tracker is located on the front panel.
The MAC address of the tracking base is located on the label of the rear panel.

Declaring the tracker

Go to CONNECT.

Tap "Configuration > System > Peripherals > Tracking system > Trackers".
Tick the box **Locating tracker**.

Click the white box below to display the screen "MAC address".
Use the keyboard to enter the 6 last digits.



Tap this icon to validate.

How to set up the Master tracking base

Go to CONNECT.

1 - In case communication with CONNECT is via USB

Tap "Configuration > System > Peripherals > Serial/USB > USB".
Set the tracking system to USB 1 or USB 2 according to the physical configuration.
Tap "Configuration > System > Peripherals > Tracking system > Settings".
Tick the box "Enable tracking system".



Tap this icon to validate.

2 - In case communication with CONNECT is via Ethernet

Tap "Configuration > System > Peripherals > Tracking system > Settings".
Tick the box "Enable tracking system".

Select "Ethernet communication".
Enter the IP address of the tracking base (by default 192.168.5.151) .



Tap this icon to validate.

3 - Declare the tracking bases

Tap "Configuration > System > Peripherals > Tracking system > Tracking bases".



Tap this icon to add a tracking base.

Click "Tracking base name-1" to customize the tracking base.
Click the white box below to display the screen "MAC address".
Use the keyboard to enter the 6 last digits.



Tap this icon to validate.

4 - Check the communication between the Master tracking base and CONNECT

Tap "Configuration > System > Peripherals > Tracking system > Check".

Tap "Check".

When the communication is correct, a tick is displayed.

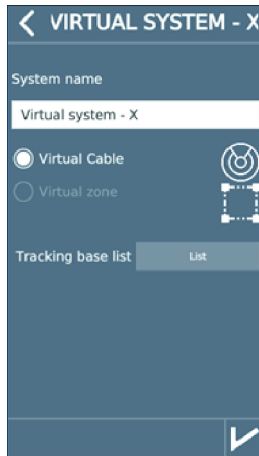
How to create a working space with CONNECT

1 - Create a Virtual cable system associated to a tracking base

Tap "Configuration > System > Peripherals > Tracking system > Infrastructure".



Tap this icon.



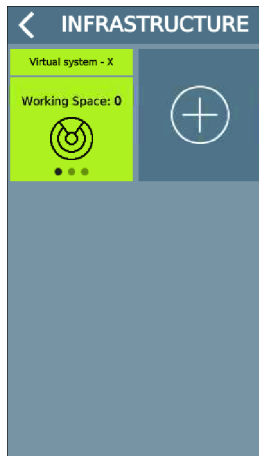
Choose a name.

Tap the **List** button to open the list of existing tracking bases.

Tap the tracking base to select it. The box turns light grey.



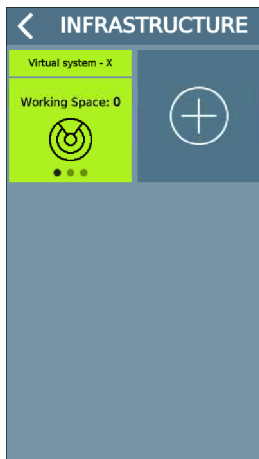
Tap this icon to validate.



The Virtual cable system is created.

2 - Select which tightening unit to associate to the working space

Tap "Configuration > System > Peripherals > Tracking system > Infrastructure".



Tap the green tile.



Tap this icon.

Customize the name of the working space.

Tap the **Empty list** button to open the list of existing tightening units.

Tap the tightening unit to select it. The box turns light grey.



Tap this icon to validate.



The tightening unit has been selected.

3 - Activate the UV for the tightening unit using the working space

Go to CVI CONFIG.

Check that CONNECT is connected to the computer.

Create a working area, add CONNECT, check the IP address.



Click this icon to update CVI CONFIG.

Go to "Feature management".

The feature "Virtual cable 1 working space" is present but not active.



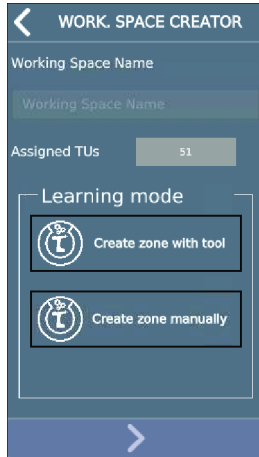
Click this icon.



Click this icon to update the product.

4 - Finish the creation of the working space

Repeat the activation of the tightening unit until the following screen.



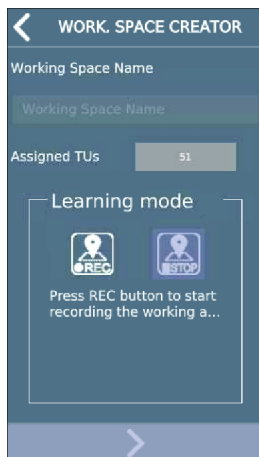
Tap "Create zone with tool". The box turns light grey.



Tap this icon to go to the next step.



Check the tool is connected.
Unplug and plug the battery pack.



Click **REC**.

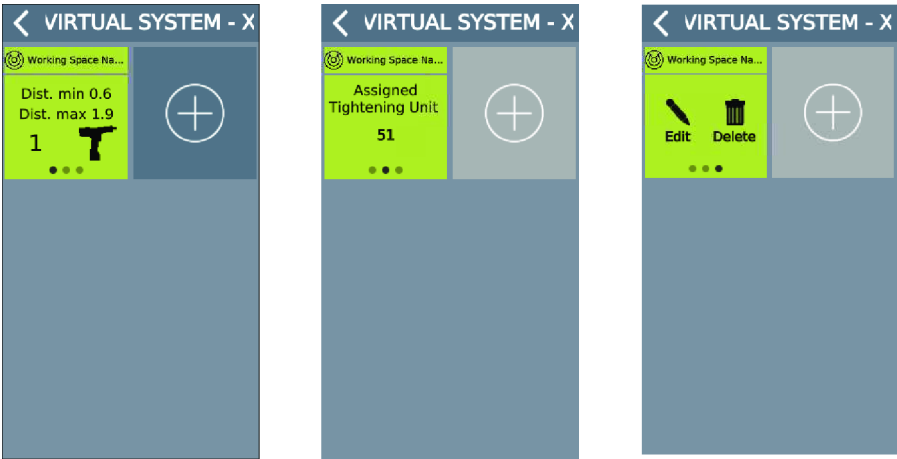
Move with the tool to the minimum distance and press the trigger.

Move then to the maximum distance and press the trigger.

Click **STOP**.



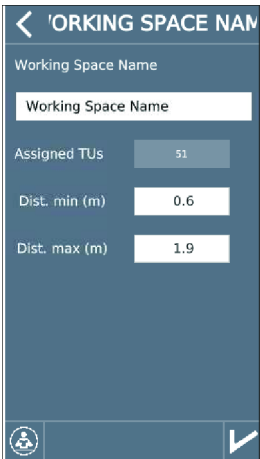
Tap this icon to go to the next step.




The working space for this tightening unit is done.
Swipe the tile to the left to control that the tightening unit is correct.
Swipe again to **Edit** or **Delete** the working space.


4 - Fine-tune manually

Click **Edit**.



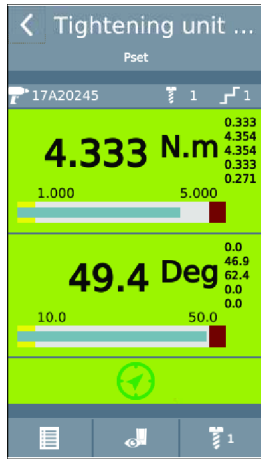
Click the figures and change them if required.

 Tap this icon to validate.

 Tap this icon to quit.

5 - Run a Pset to test the settings

Run a Pset in the working space.



See in the screen above, the green anchor attesting that the system is working correctly.

- ① When the tool is outside the working space, "E931" is displayed on the tool display. Press OK to quit.

Operating Instructions

Using the Virtual cable solution

The tool is enabled when the operator uses the tool inside the working space.

The tool is disabled if the operator goes outside the working space.

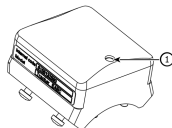
The user info "I931 - Tool locked by Tracking system" is displayed on both CONNECT and tool display. Tap "OK" to clear the message.

- ① If the tightening is running as the operator goes outside the working space, the tool is by default stopped. This behaviour can be configured with the parameter "Stop when ongoing tightening is outside working space" available in Tightening Unit settings in CVI CONFIG and CONNECT.

Troubleshooting

Troubleshooting for Virtual Cable

Led indicators with Virtual cable system based on 1 coordinator and x Tracker(s):



Coordinator Tracking Base			Tracker	Diagnostic LED Status
LED 4	LED 5	LED 6	LED 1	
OFF	OFF	OFF	Blue*	Power problem on Coordinator Tracking Base
			Red	
White	Blue Blinking	Blue	OFF	Power problem on Tracker
White	Blue Blinking	OFF	Blue*	Configuration problem on Tracking Base :
			Red	1. Ethernet / serial communication error.
				2. Wrong network interface used
				3. Wrong Tracking base IP address.
				4. No cable between CONNECT and Tracking Base
White	Green Blinking	OFF	Green	Configuration problem between CONNECT and Tracking Base :
				1. No communication between CONNECT and PoE injector
				2. Wrong network interface used
				Tool is Locked
White	Red Blinking	Blue	Blue *	Configuration problem on Tracking Base :
			Red	1. Tracking base wrong type (slave instead of Master)
White	Blue Blinking	Blue	Red	Configuration problem on Tracker / Tracking Base
				1. Wrong UWB channel
				2. Wrong MAC address
White	Blue Blinking **	Blue	Blue*	Tracker not visible from Tracking Base (Out of range)
			Red	
White	Green Blinking	Blue	Green	Virtual Cable system OK
White	Blue Blinking **	Blue	OFF	Tracker switch off

* LED color If previously virtual cable system was OK. After system restart, LED color is the 2nd choice.

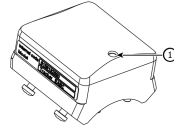
** When several Tracker is used : Coordinator LED 5 turns to Green blinking as soon as 1 tracker is functional.

Led indicators with Virtual cable system based on 1 coordinator, x Master, x slave and x Tracker(s):

i Analysis should be done with the following steps:

- Check UWB network with Coordinator Tracking Base with its Tracker (if exists)
- Check other UWB network one by one.

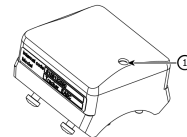
1. Check Coordinator Tracking Base and its tracker LED status.

**Coordinator Tracking Base****Tracker****Diagnostic LED Status**

LED 4	LED 5	LED 6	LED 1	
OFF	OFF	OFF	Blue*	Power problem on Coordinator Tracking Base
			Red	
White	Blue Blinking	Blue	OFF	Power problem on Tracker
White	Blue Blinking	OFF	Blue*	Configuration problem on coordinator tracking base :
			Red	1. Ethernet / serial communication error.
				2. Wrong network interface used
				3. Wrong Tracking base IP address.
				4. No cable between CONNECT and Tracking Base
White	Blue Blinking	Blue	Red	Configuration problem on Tracker / Tracking base:
				1. Wrong UWB channel
				2. Wrong MAC address
White	Green Blinking	Blue	Green	Go to Step 2 analysis

* LED color If previously virtual cable system was OK. After system restart, LED color is the 2nd choice.

2. Check other UWB network one by one.

**Master Tracking Base****Slave Tracking Base****Tracker****Diagnostic LED Status**

LED 4	LED 5	LED 6	LED 4	LED 5	LED 6	LED 1	
OFF	OFF	OFF	White	Blue	OFF	Blue*	Power problem on master tracking base
				Red		Red	
White	Green Blinking	Blue	OFF	OFF	OFF	Green	Power problem on slave tracking base
White	Green Blinking	Blue	White	Green	OFF	OFF	Power problem on tracker
White	Green * Red	OFF	White	Green	OFF	Green	Configuration problem on Master tracking base :
							1. Ethernet / serial communication error
							2. Wrong network used
							3. Wrong tracking base IP
							4. No cable between CONNECT and tracking base

Troubleshooting

White	Green * Red	Blue OFF	White	Blue* Red	OFF	Blue* Red	Configuration problem on master tracking base : Tracking base wrong type (slave instead of master)
White	Green Blinking	Blue	White	Red	OFF	Green	Tool is locked. Configuration problem on Slave Tracking base : 1. Wrong UWB channel 2. Wrong MAC address
White	Green Blinking	Blue	White	Green * Blue	OFF	Red	Configuration problem between tracker / slave tracking base : 1. Wrong UWB channel 2. Wrong MAC address
White	Blue Blinking	Blue	White	Blue	OFF	Blue	Master and slave tracking bases not visible from coordinator tracking base (out of range)
White	Green Blinking	Blue	White	Green	OFF	Blue	Tracker not visible from Slave Tracking base (out of range)
White	Green Blinking	Blue	White	Green	OFF	Green	Virtual Cable system OK
White	Blue Blinking	Blue	White	Red/Green* (Alternate) Blue	OFF	Red/Green* (Alternate) Blue	Multiple coordinator tracking base detected

*LED color If previously virtual cable system was OK. After system restart, LED color is the 2nd choice

** When several tracker is used : Coordinator led (5) turns to green blinking as soon as 1 tracker is functional.

Original instructions

Founded in 1914 and headquartered in France, Desoutter Industrial Tools is a global leader in electric and pneumatic assembly tools serving a wide range of assembly and manufacturing operations, including Aerospace, Automotive, Light and Heavy Vehicles, Off-Road, General Industry.

Desoutter offers a comprehensive range of Solutions -tools, service and projects- to meet the specific demands of local and global customers in over 170 countries.

The company designs, develops and delivers innovative quality industrial tool solutions, including Air and Electric Screwdrivers, Advanced Assembly Tools, Advanced Drilling Units, Air Motors and Torque Measurement Systems.

Find more on www.desouttertools.com



More Than Productivity